

The logo for STONE real estate, featuring the word "STONE" in a bold, sans-serif font inside a white speech bubble shape.

25/220 Longueville Road Lane Cove, NSW

2 

1 

1 

## Privacy, tranquillity and vibrant centrality

Serenity and seclusion are the hallmarks of this double-brick apartment with natural light flowing across its north-facing balcony through floor to ceiling glass. Accessibility and proximity are the advantages of this residential address, with schools and transport at your door with the verve and versatility of Lane Cove Plaza's shops and entertainment options only minutes away.

- North facing unit
- Sunlit kitchen with breakfast bar and space for dining by the balcony
- Two large bedrooms enjoy tranquil treetop views
- New carpeting throughout, secure intercom access
- Additional exclusive use of lock-up storage room
- Modern, light filled bathroom with separate glass shower enclosure
- Close to rapid transit to CBD, Chatswood, Nth Sydney, Macquarie Centre
- Easy stroll to Lane Cove Golf Course, Aquatic Centre, Longueville Sports Club

Price:

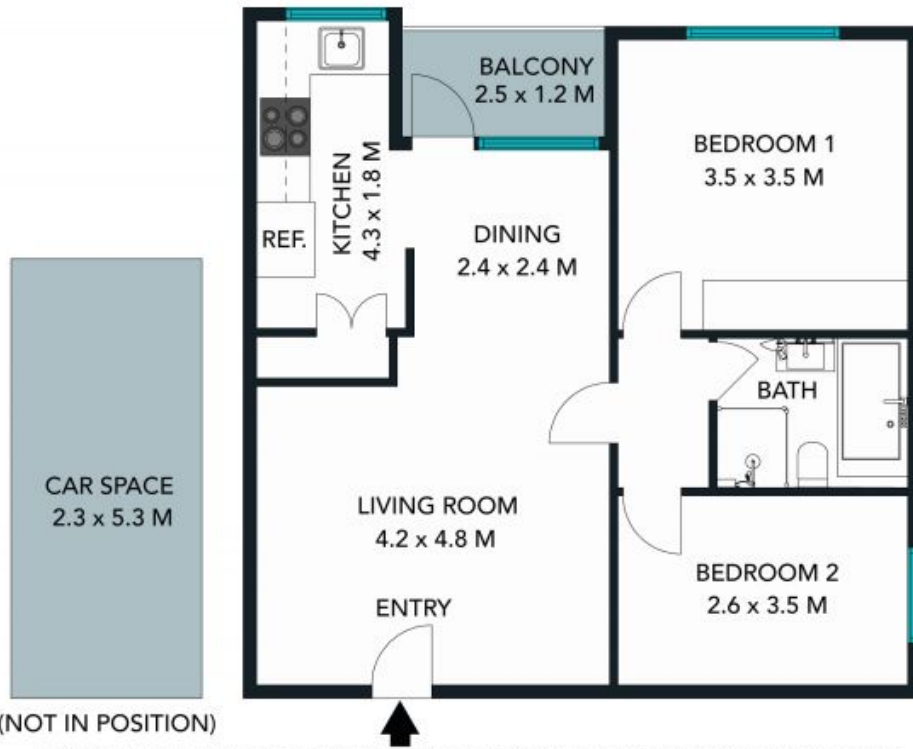
Contact Agent



**Terasse Calligeros**

0418 245 874





The floor plan is not to scale; measurements are indicative and in metres. Exterior elements are not in position. Plans should not be relied on. Interested parties should make and rely on their own enquiries.

25/216-220 Longueville Road, Lane Cove  
stonerealestate.com.au

Produced by DIAKRIT



The floor plan is not to scale; measurements are indicative and in metres. All features included in this 3D plan are for inspiration purposes only. This is not an exact replica of the property or the position of exterior elements. Plans should not be relied on. Interested parties should make and rely on their own enquiries.

25/216-220 Longueville Road, Lane Cove  
 stonerealestate.com.au

Produced by DIAKRIT