

73/102 Crimea Road Marsfield, NSW

2 2 2

### Private sunlit townhouse, renovators' delight

A green retreat with an impressive sense of space, this freshly painted townhouse is generous in every respect. It's positioned towards the quiet rear of a perfectly maintained garden complex to enjoy stunning views of Lane Cove National Park, making for a sunny low maintenance home with superb complex facilities, a double lock-up garage and instant accessibility to everything.

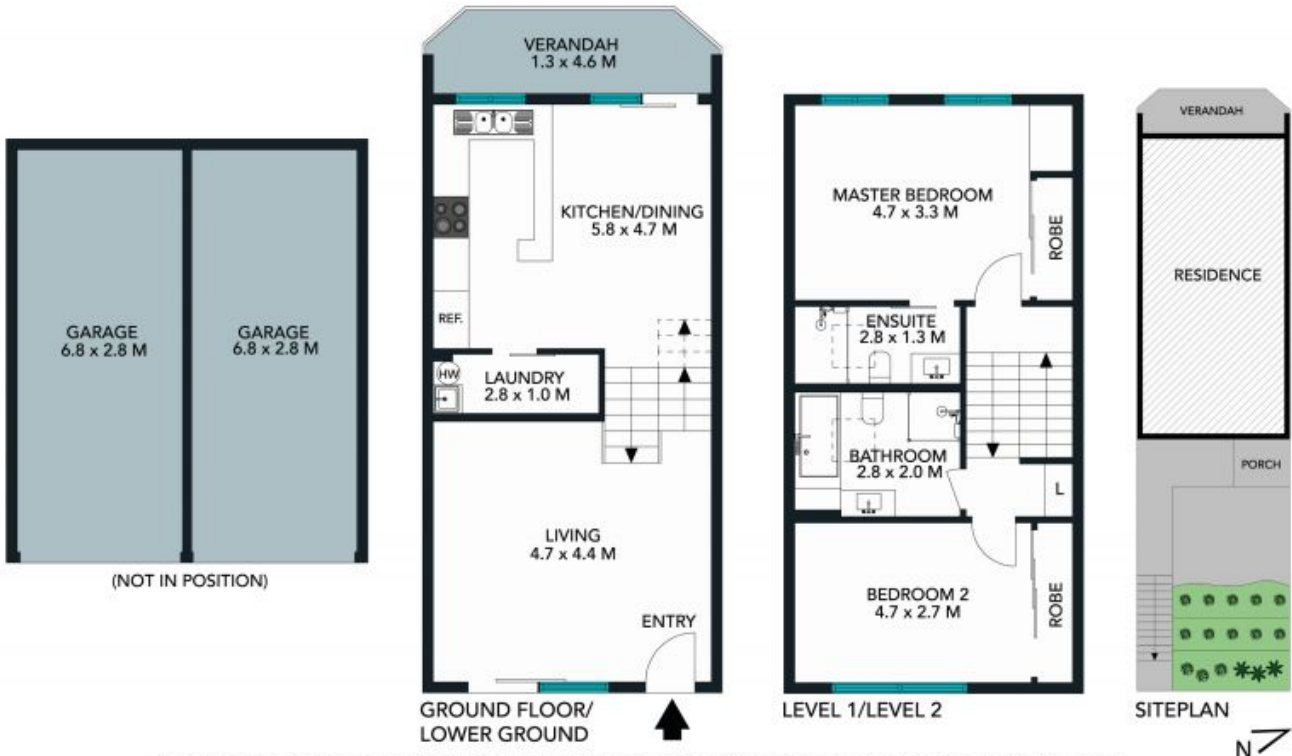
- Central cul-de-sac setting, footsteps to Macquarie/CBD buses, Epping Boys
- Property opposite garage and moments to Epping station/Cheltenham Girls
- Nestled away with pleasantly private courtyard and no overlooking residences
- Bright and practical split-level layout with wonderful outdoor flow
- Tidy main bathroom and ensuite with skylights, scenic balcony and cosy living
- Neat original kitchen, good storage, large beds with built-ins/main with ensuite
- Freshly painted, renovators' delight, air cons and internal laundry
- Complex exclusively equipped with pristine indoor pool, sauna and gymnasium

**Price:** SOLD \$720,000  
**Council Rates:** \$307.00 p/q  
**Water Rates:** \$172.00 p/q  
**Strata Rates:** \$867.00 p/q



**Vincent Goh**

0412 316 797



The site plan and floor plan are not to scale; measurements are indicative and in metres. Bushes and trees are placed for illustration purposes. Plans should not be relied on. Interested parties should make and rely on their own enquiries.

73/102 Crimea Road, Marsfield  
 stonerealestate.com.au

Produced by DIAKRIT



GROUND FLOOR/  
LOWER GROUND



LEVEL 1/LEVEL 2



The floor plan is not to scale; measurements are indicative and in metres. All features included in this 3D plan are for inspiration purposes only. This is not an exact replica of the property or the position of exterior elements. Plans should not be relied on. Interested parties should make and rely on their own enquiries.

73/102 Crimea Road, Marsfield  
stonerealestate.com.au

Produced by DIAKRIT