



230/25 Bennelong Road Wentworth Point, NSW



## Huge apartment with brand new carpets and freshly painted

This stunning one bedroom oversized apartment ticks all the boxes. Offering separate lounge and dining aspects and water glimpses along with being set in one of Sydney's best developments and boasting access to Pulse gym, pool, tennis courts, on site shopping facilities and cafes this property should not be missed. All of this set on the water's edge makes this home feel like a holiday home but still within reach of the city CBD.

**Price:** Application Received

**Bond:** \$1,880

**Available Date:** 25/03/2019



**Rick Pignetti**

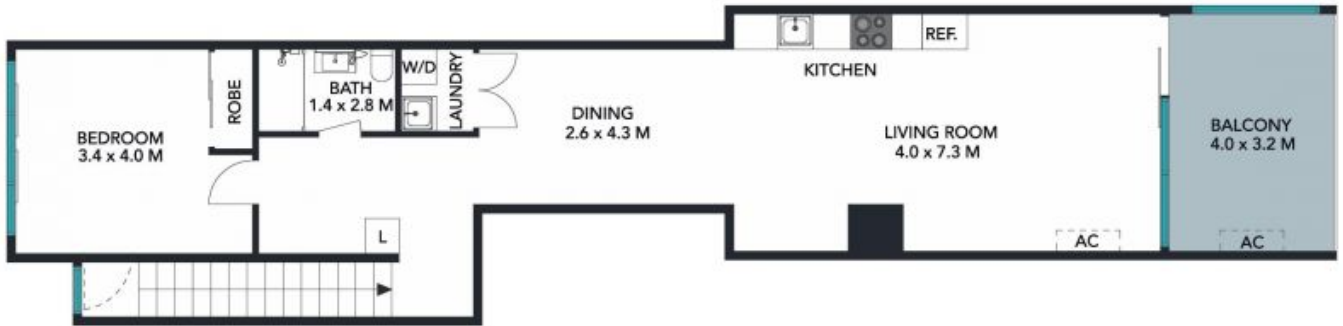
0439 398 959



The floor plan is not to scale; measurements are indicative and in metres. All features included in this 3D plan are for inspiration purposes only. This is not an exact replica of the property or the position of exterior elements. Plans should not be relied on. Interested parties should make and rely on their own enquiries.

230/25 Bennelong Road, Wentworth Point  
stonerealestate.com.au

Produced by DIAKRIT



Produced by DIAKRIT