



3/47 Bradleys Head Road Mosman, NSW



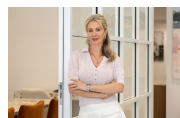
SOLD

Price:

Contact Agent

Sophisticated and Stylish Abode with Harbour views

Uninterrupted Sydney Harbour views across to the Eastern Suburbs and ocean form a breathtaking outlook for this immaculate apartment. Beautifully designed to provide a low maintenance living environment with a focus on complete privacy and outdoor entertaining. It has its own private entrance and occupies an entire level of a tightly-held boutique building, with only two neighbours, both are owner-occupied.



Marize Bellomo

0414 972 203



The floor plan is not to scale; measurements are indicative and in metres. All features included in this 3D plan are for inspiration purposes only. This is not an exact replica of the property or the position of exterior elements. Plans should not be relied on. Interested parties should make and rely on their own enquiries.

3/47 Bradleys Head Road, Mosman
stonerealestate.com.au

Produced by DIAKRIT



The floor plan is not to scale; measurements are indicative and in metres. Exterior elements are not in position. Plans should not be relied on. Interested parties should make and rely on their own enquiries.

3/47 Bradleys Head Road, Mosman
 stonerealestate.com.au

Produced by DIAKRIT