




17/2 Leisure Close Macquarie Park, NSW 1  1  1 

Lifestyle, Convenience, Value

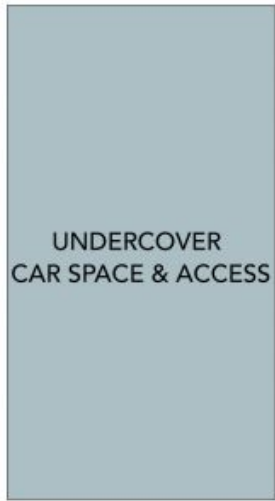
This inviting corner unit is a peaceful hidden retreat, set at the picturesque end of a quiet cul-de-sac bordering the national park. The home is very private with only one common wall and filled with natural light from its north-facing aspect and multiple windows. Its district views and leafy treetop vista presents an unsurpassed lifestyle of modernity that is truly an urban hideaway. An attractive value proposition for first home buyers, investors (recent rental \$450/week) and downsizers alike.

Price: SOLD \$468,000
Council Rates: \$303.00 p/q
Water Rates: \$172.00 p/q
Strata Rates: \$623.00 p/q

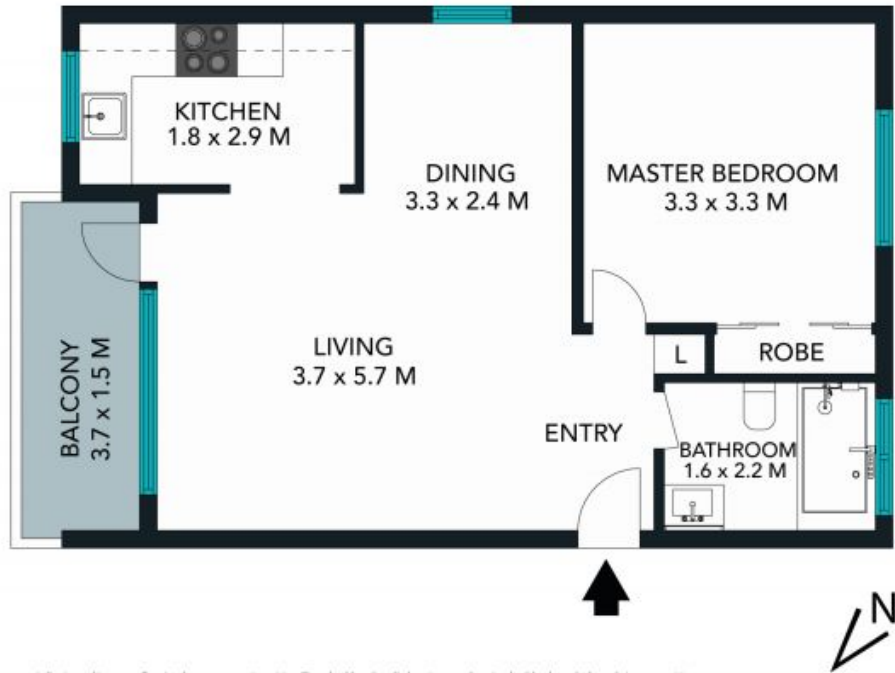


Vincent Goh

0412 316 797



(NOT IN POSITION)



The floor plan is not to scale; measurements are indicative and in metres. Exterior elements are not in position. Plans should not be relied on. Interested parties should make and rely on their own enquiries.

17/2 Leisure Close, Macquarie Park
stonerealestate.com.au

Produced by DIAKRIT



The floor plan is not to scale, measurements are indicative and in metres. All features included in this 3D plan are for inspiration purposes only. This is not an exact replica of the property or the position of exterior elements. Plans should not be relied on. Interested parties should make and rely on their own enquiries.

17/2 Leisure Close, Macquarie Park
stonerealestate.com.au

Produced by DIAKRIT