

65/102 Crimea Road Marsfield, NSW



Enjoy tranquility and convenience

If tranquility and accessibility are close to the top of your list of prerequisites, then this townhouse, embraced by the treetops of Lane Cove National Park, will hold immense appeal for an intuitive purchaser. The home conveys a welcoming ambience and a leisurely way of life, in its whisper quiet enclave, while close to excellent transport, village shops and popular schools.

Price:

Sold \$695,000



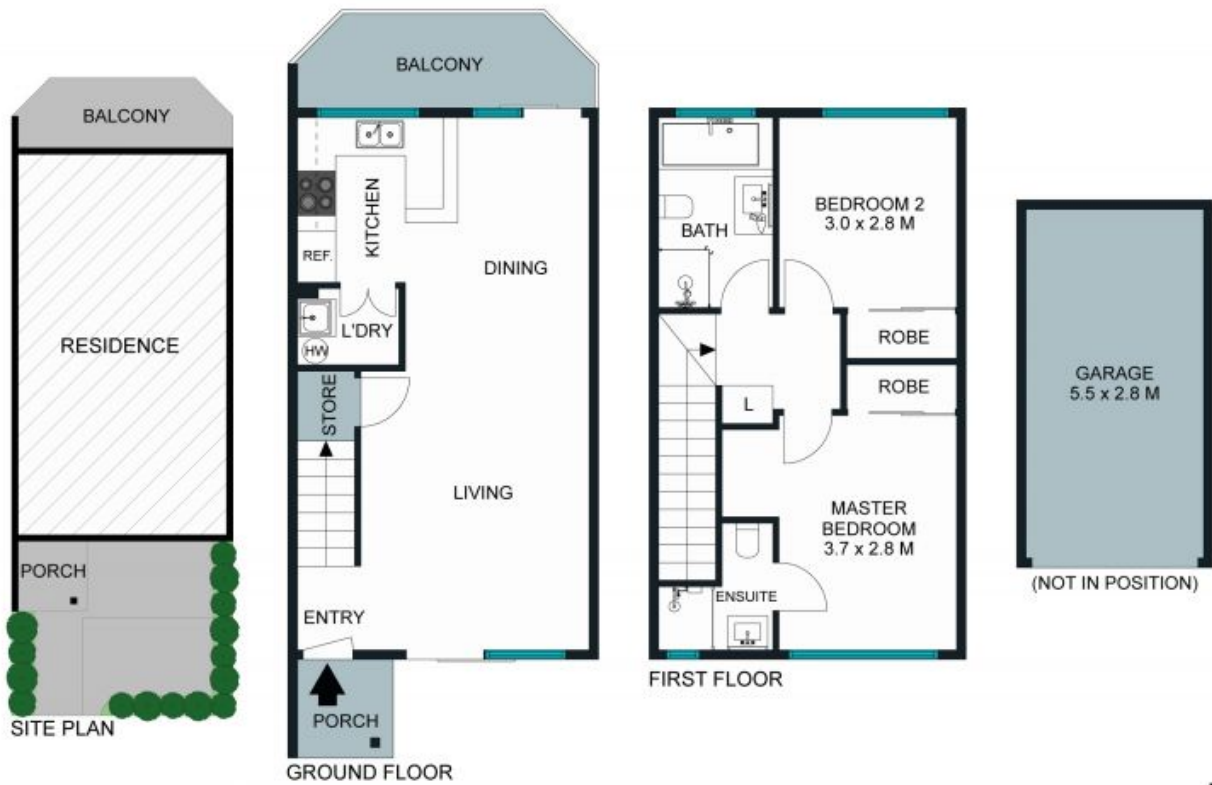
Vincent Goh

0412 316 797



Vincent Goh

0412 316 797



The site plan and floor plan are not to scale; measurements are indicative and in metres. Bushes and trees are placed for illustration purposes. Plans should not be relied on. Interested parties should make and rely on their own enquiries.





GROUND FLOOR

FIRST FLOOR



The floor plan is not to scale; measurements are indicative and in metres. All features included in this 3D plan are for inspiration purposes only. This is not an exact replica of the property or the position of exterior elements. Plans should not be relied on. Interested parties should make and rely on their own enquiries.

65/102 Crimea Road, Marsfield
stonerealestate.com.au

Produced by DIAKRIT