



24 Wunda Road Mosman, NSW

5

4

3

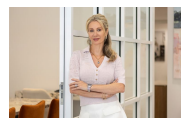
Stunning Federation Residence

Gracing the high side of one of Mosman's desirable streets, this renovated character family residence perfectly blends period charm with modern day expectations of comfort. Set on a vast 697 sqm parcel, exquisite interiors reveal a stunning master retreat with picturesque window and private balcony views sweeping across Sydney's iconic city skyline, Opera House and Harbour Bridge.

- Elegant arched entrance hall flows to a choice of formal and casual living areas
- Light filled integrated living and dining with enviable gas fireplace
- Bi-fold doors open to northwest alfresco area, private garden and pool
- Deluxe stone island kitchen with walk-in butler's pantry and Miele appliances
- Generous bedrooms, Master offers walk-in robe, palatial ensuite and balcony
- Flexible office/guest bedroom, main bathroom has rain shower, separate bath
- Guest w/c, ducted air conditioning, timber floors, high ceilings, tandem carport
- Walk to city buses, schools, Mosman Village shops/cafes, and Balmoral Beach

Price:

Contact Agent



Marize Bellomo

0414 972 203



The floor plan is not to scale; measurements are indicative and in metres. All features included in this 3D plan are for inspirational purposes only. This is not an exact replica of the property or the position of exterior elements. Plans should not be relied on. Interested parties should make and rely on their own enquiries.

24 Wunda Road, Mosman
stonerealestate.com.au

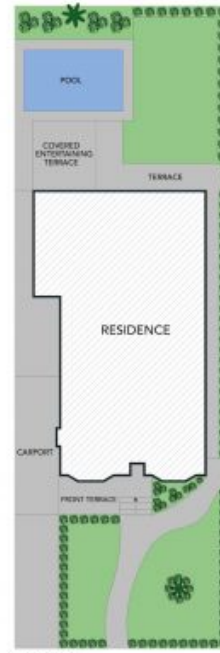
Produced by DIAKRIT



GROUND FLOOR



FIRST FLOOR



SITE PLAN



The site plan and floor plan are not to scale; measurements are indicative and in metres. Bushes and trees are placed for illustration purposes. Plans should not be relied on. Interested parties should make and rely on their own enquiries.