



30/1 Hyam Street Balmain, NSW



Executive Living within a Tranquil Location

This resort style town home offers a very inviting and bright living space, with a dedicated dining area and balcony, adjacent to the kitchen. With focus on year-round entertaining, this home is set within a stroll to Balmain's vibrant village lifestyle. Quietly set within a tightly held development and surrounded by parkland, this home offers the quintessential low maintenance lifestyle, focussing on entertaining, wonderful security and internal access to an overly generous tandem lock up garage with ample space for storage.

Price: Contact Agent
Council Rates: \$1,118.00/year (approx)
Water Rates: \$172.00 p/q
Strata Rates: \$772.00 p/q



Marize Bellomo

0414 972 203



GARAGE FLOOR



FIRST FLOOR



GROUND FLOOR



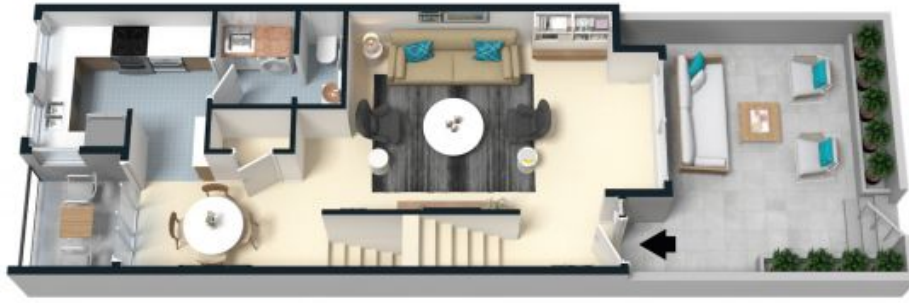
The floor plan is not to scale; measurements are indicative and in metres. Exterior elements are not in position. Plans should not be relied on. Interested parties should make and rely on their own enquiries.



GARAGE FLOOR



FIRST FLOOR



GROUND FLOOR



The floor plan is not to scale; measurements are indicative and in metres. All features included in this 3D plan are for inspiration purposes only. This is not an exact replica of the property or the position of exterior elements. Plans should not be relied on. Interested parties should make and rely on their own enquiries.

30/1 Hyam Street, Balmain
stonerealestate.com.au

Produced by DIAKRIT