



7 Monash Avenue East Killara, NSW

3 

1 

1 

Golden opportunity in tranquil family setting

Offered for the 1st time in nearly 50 years, this entry level north/east-facing double-brick home presents outstanding potential. Set on 992.7sqm (approx) in a peaceful cul-de-sac, its easy flow single level floorplan with stunning bush outlook and backs directly onto lush parkland, present a superb renovation opportunity or the option to build in an idyllic location (STCA).

- Double aspect living room with fireplace & French doors to balcony & garden
- Adjoining dining room with picture window framing magnificent bush view
- Light & bright original kitchen with casual dining area also opens to balcony
- Spacious Master bedroom with wall of built-in robes, two additional bedrooms
- Well-maintained family bathroom features both bath & shower plus separate w/c
- Garage with internal access, underhouse laundry & storage, rainwater tank
- Lindfield East Public & Killara High catchment, bus to Lindfield rail & shops

Price:

Contact agent



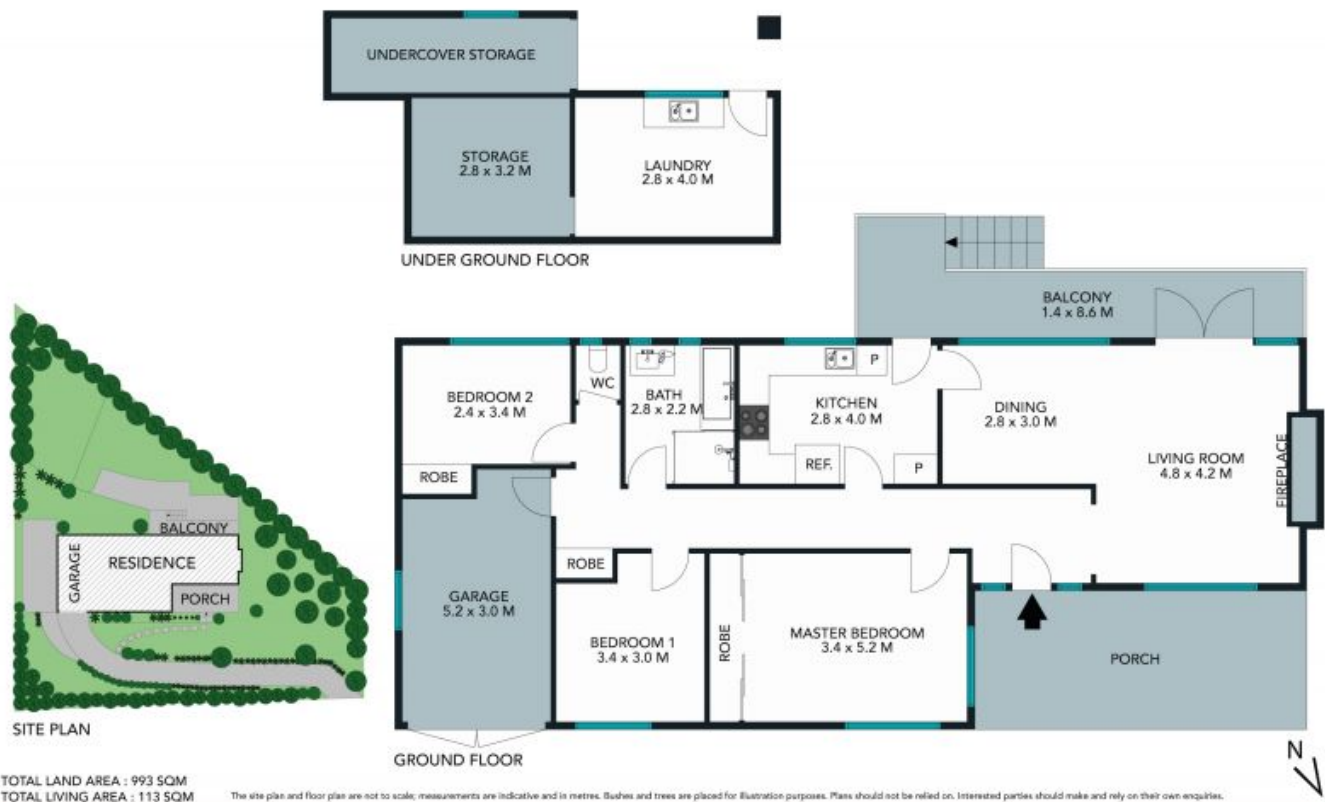
Steven Kourdis

0402 555 675



Bobby Shi

0404 823 911



7 Monash Ave, East Killara
stonerealestate.com.au

Produced by DIAKRIT



7 Monash Ave, East Killara
stonerealestate.com.au

Produced by DIAKRET