



13 Delaware Street Spring Farm, NSW 4  2  2 

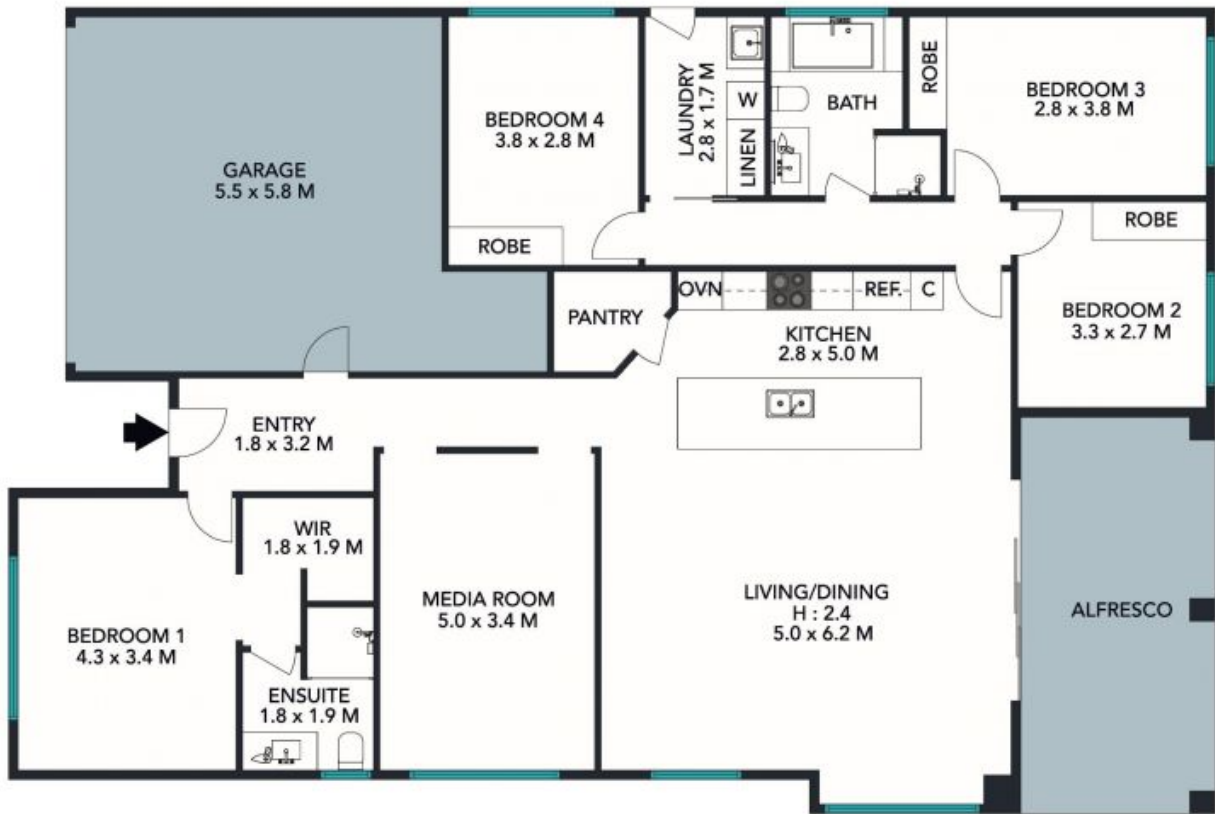
### Spacious Backyard

We are very excited to present this immaculate four bedroom property situated in a sought after location close to parks, walking tracks and the local shops. The property features multiple living areas including a large media/lounge room and an open plan kitchen, dining and family area at the rear. The stunning kitchen includes gas cooking, dishwasher and stone bench tops with plenty of cupboard space. Our favourite feature has to be the large outdoor entertaining area and spacious backyard perfect for kids and pets to play. Please join us at our scheduled showing as this one won't last long at all.

Price: \$740,000



**Chris Philp**  
0418686511



TOTAL LAND AREA : 550 SQM  
 TOTAL LIVING AREA : 172 SQM

The floor plan is not to scale; measurements are indicative and in metres. Exterior elements are not in position. Plans should not be relied on. Interested parties should make and rely on their own enquiries.



Produced by DIAKRIT



The floor plan is not to scale, measurements are indicative and in meters. All features included in this 3D plan are for inspiration purposes only. This is not an exact replica of the property or the position of exterior elements. Plans should not be relied on. Interested parties should make and rely on their own enquiries. Produced by DIAKRIT

