



4/126 Pittwater Road Gladesville, NSW

3

3

2

Natural light, soaring expanse, urban centrality

This spacious dual-level penthouse boasts a double-height ceiling floating high above two waterfalls of glass ensuring sunlight and cross breezes from a tranquil balcony to the broad terrace. At the heart of a Boronia Park Village yet secluded above it all, this architecturally stunning home embodies superb contemporary urban style.

- Immense 248sqm on title
- Circa 2011, boutique block of 8
- North east aspect and treetop views, secure lift access
- Gleaming kitchen, gas, SMEG appliances, Caesarstone, breakfast bar, pantry
- Distinct living areas crafted to enjoy an all-season indoor/outdoor lifestyle
- Tranquil sunlit bedrooms, built-ins, 2 with private a balcony
- 3 huge designer bathrooms, master ensuite, frameless glass, premium finishes
- Reverse-cycle ducted air conditioning, massive storage throughout

Price: \$1,280,000



Terase Calligeros

0418 245 874



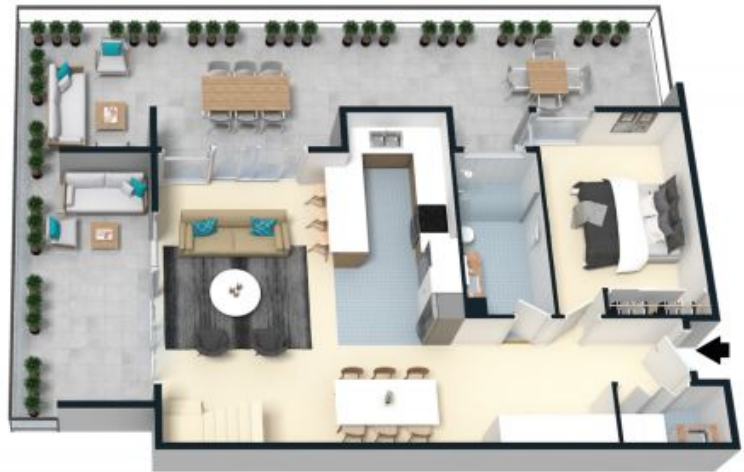
(NOT IN POSITION)

The floor plan is not to scale; measurements are indicative and in metres. Exterior elements are not in position. Plans should not be relied on. Interested parties should make and rely on their own enquiries.





FIRST FLOOR



GROUND FLOOR



The floor plan is not to scale; measurements are indicative and in metres. All features included in this 3D plan are for inspiration purposes only. This is not an exact replica of the property or the position of exterior elements. Plans should not be relied on. Interested parties should make and rely on their own enquiries.

4/126 Pittwater Road, Gladesville
stonerealestate.com.au

Produced by DIAKRIT