



7/257 Pacific Highway Lindfield, NSW

2

1

1

### Relaxed living in the heart of Lindfield village

One of just 15 residences in a boutique complex an easy level walk to rail, shops and cafes, this elevated ground floor apartment's stylish interiors feature sun-drenched living areas, two generous bedrooms and covered outdoor entertaining. Recently updated, with new carpets and freshly painted throughout, there is still potential to further capitalise on your investment.

Price:

Contact Agent

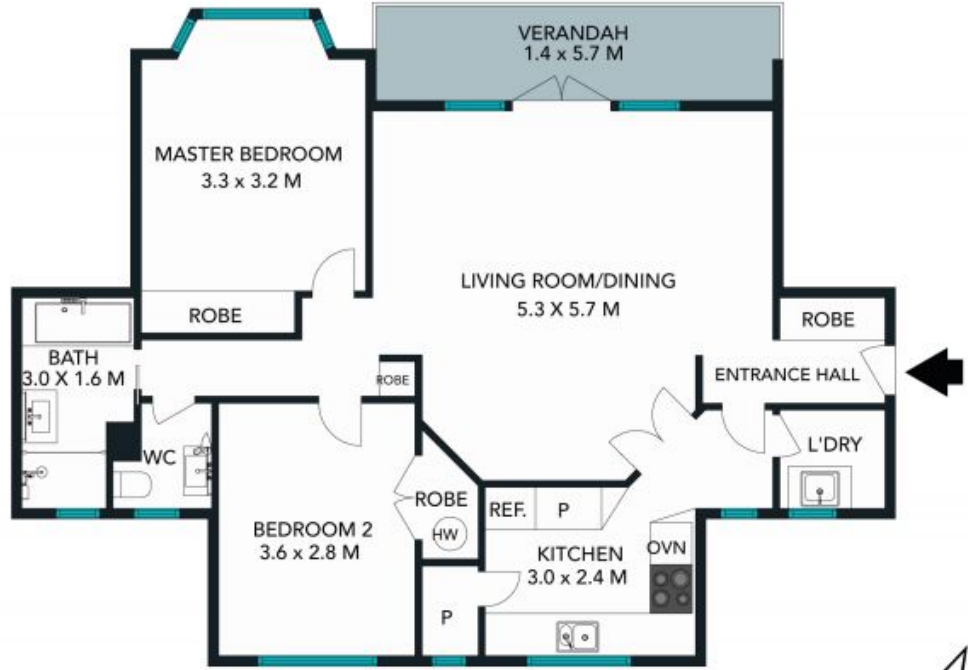


**Greg Mooney**

0413 384 545



(NOT IN POSITION)



INTERNAL AREA : 79 SQM

The floor plan is not to scale; measurements are indicative and in metres. Exterior elements are not in position. Plans should not be relied on. Interested parties should make and rely on their own enquiries.

7/257 Pacific Highway, Lindfield  
stonerealestate.com.au

Produced by DIAKRIT



The floor plan is not to scale; measurements are indicative and in metres. All features included in this 3D plan are for inspiration purposes only. This is not an exact replica of the property or the position of exterior elements. Plans should not be relied on. Interested parties should make and rely on their own enquiries.

7/257 Pacific Highway, Lindfield  
stonerealestate.com.au

Produced by DIAKRIT