



91 Seaforth Crescent Seaforth, NSW



Tightly-held original deep waterfront on the Bluff

One of the few remaining untouched deep waterfronts on the Bluff with level access from the street, this solid brick home (c1958) is available for only the second time and offers rare scope to create the dream in a dress circle setting. Situated on 575sqm of street-to-waterfront gardens coupled with panoramic views over Middle Harbour combine to make this an opportunity of undeniable prestige and exclusivity.

Price:

Contact Agent



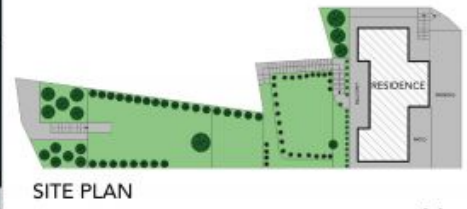
Julian Rowe

0412 544 448



Maria Cassarino

0411 818 093



The site plan and floor plan are not to scale, measurements are indicative and in metres. Bushes and trees are placed for illustration purposes. Plans should not be relied on. Interested parties should make and rely on their own enquiries.

91 Seaforth Crescent, Seaforth
stonerealestate.com.au

Produced by DIAKRIT



GROUND LEVEL



LOWER LEVEL



The floor plan is not to scale, measurements are indicative and in metres. All features included in this 3D plan are for inspiration purposes only. This is not an exact replica of the property or the position of exterior elements. Plans should not be relied on. Interested parties should make and rely on their own enquiries.

91 Seaforth Crescent, Seaforth
stonerealestate.com.au

Produced by DIAKRIT