

2/7 Chapman Avenue Beecroft, NSW      1       1       1 

### Grand private haven

A grand private haven nestled within the exclusive collection of 'The Croft' apartments, this stunning contemporary residence offers space and style in a premier location. Interiors are sun-splashed with premium finishes for effortless designer luxury, while its sought-after position is second to none in convenience with Beecroft station and village shops just footsteps away.

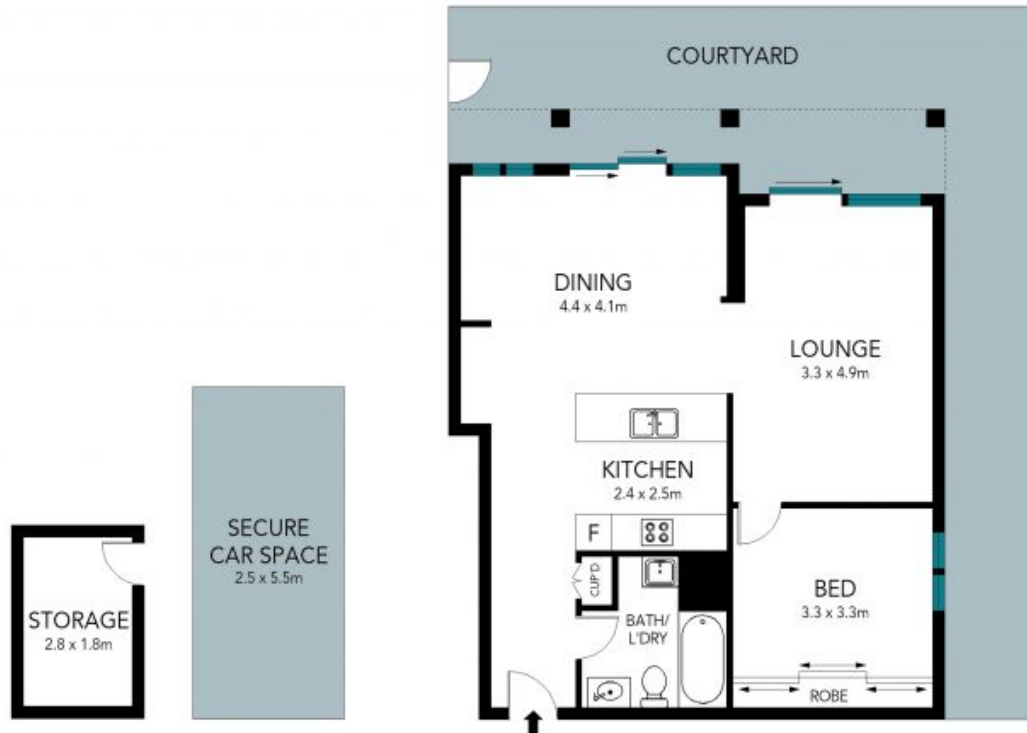
**Price:** Contact Agent  
**Council Rates:** \$276.00 p/q  
**Water Rates:** \$260.00 p/q



**Jeff Jianfu Luo**  
0425 286 668



**Kevin Dearlove**  
0403 338 302



The floor plan is not to scale; measurements are indicative and in metres. Exterior elements are not in position. Plans should not be relied on. Interested parties should make and rely on their own enquiries.



2/7 Chapman Avenue, Beecroft

stonerealestate.com.au