



3/102 Mitchell Avenue Kurri Kurri, NSW

2  1  1 

Neat as a pin

Designed for effortless living, this solid brick villa is bathed in sunlight, rests in a well-kept complex and enjoys a short walk from the main street.

Price: \$260.00
Bond: \$1,040
Available Date: 14/06/2019



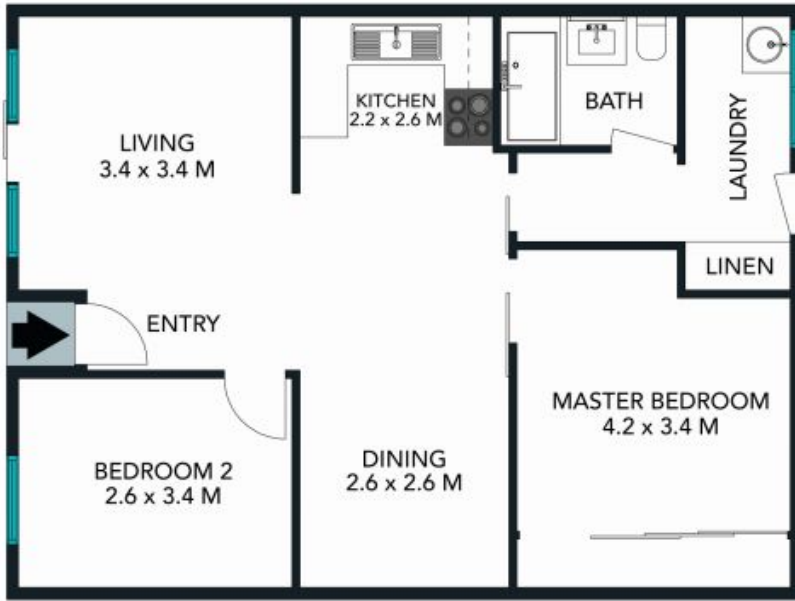
Tegan Ashman

02 4089 1122



Breanna Salkeld

02 4089 1122

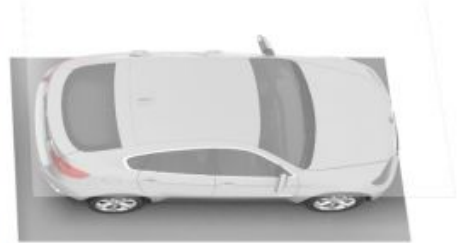


The floor plan is not to scale; measurements are indicative and in metres. Exterior elements are not in position. Plans should not be relied on. Interested parties should make and rely on their own enquiries.



3/102 Mitchell Avenue, Kurri Kurri
stonerealestate.com.au

Produced by DIAKRIT



The floor plan is not to scale; measurements are indicative and in metres. All features included in this 3D plan are for inspiration purposes only. This is not an exact replica of the property or the position of exterior elements. Plans should not be relied on. Interested parties should make and rely on their own enquiries.

3/102 Mitchell Avenue, Kurri Kurri
stonerealestate.com.au

Produced by DIAKRIT