



27 Moase Street Wallsend, NSW

3

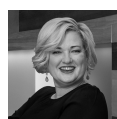
2

2

A fresh take on a 70's classic

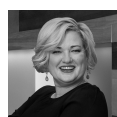
Offering an easy-care home with plenty of appeal, this much-loved classic radiates charm by combining a refreshed interior layout, views through to Mount Sugarloaf and a great lifestyle location in a popular family pocket. Presented in excellent condition with raked ceilings adding a true sense of space, this home is ideally placed just 750m from Elernore Vale shopping centre.

Price: \$527,500



Rebecca Pearson

0433 136 164



Rebecca Pearson

0433 136 164



SITE PLAN



LOCK UP GARAGE
8.8 x 6.0 M

UNDER HOUSE
(NOT IN POSITION)



The site plan and floor plan are not to scale; measurements are indicative and in metres. Bushes and trees are placed for illustration purposes. Plans should not be relied on. Interested parties should make and rely on their own enquiries.



The floor plan is not to scale; measurements are indicative and in metres. All features included in this 3D plan are for inspiration purposes only. This is not an exact replica of the property or the position of exterior elements. Plans should not be relied on. Interested parties should make and rely on their own enquiries.

27 Moase Street, Wallsend
stonerealestate.com.au

Produced by **DIAKRIT**