

7 Marmion Street Camperdown, NSW



### Inviting low maintenance retreat with secure parking

In one of Camperdown's wide tree-lined streets, rare for the area, and featuring a blend of the original and new, this gorgeous character terrace on approx. 127sqm provides a haven of classic appeal and modern style. It offers easy flow over a single level under multiple skylights along with a bonus attic storage area plus tranquil private courtyard and convenient rear lane access to essential parking. Perfect as a starter or downsize option, the home is enviably located in a family neighbourhood near dog-friendly parks, bus/rail transport to the city and the hub of Newtown.

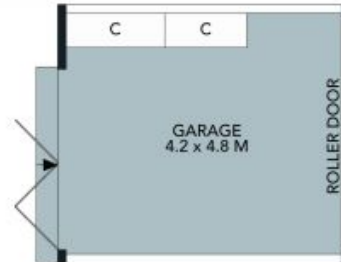
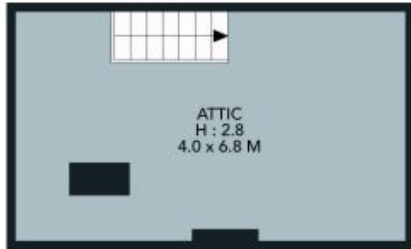
Price:

Contact Agent



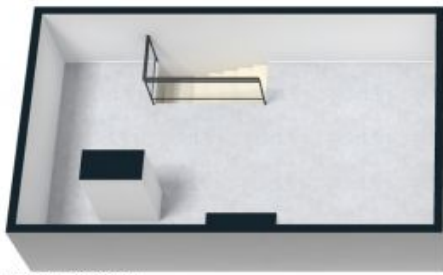
**Adrian Vassallo**

0406 484 994



The site plan and floor plan are not to scale; measurements are indicative and in metres. Bushes and trees are placed for illustration purposes. Plans should not be relied on. Interested parties should make and rely on their own enquiries.





FIRST FLOOR



GROUND FLOOR



The floor plan is not to scale; measurements are indicative and in metres. All features included in this 3D plan are for inspiration purposes only. This is not an exact replica of the property or the position of exterior elements. Plans should not be relied on. Interested parties should make and rely on their own enquiries.

7 Marmion Street, Camperdown  
stonerealestate.com.au

Produced by DIAKRIT