



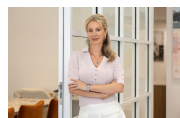
4/18 Parriwi Road Mosman, NSW

3

2

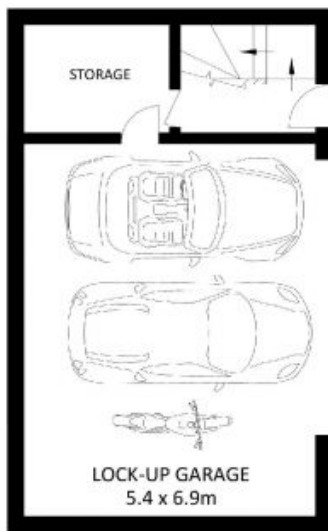
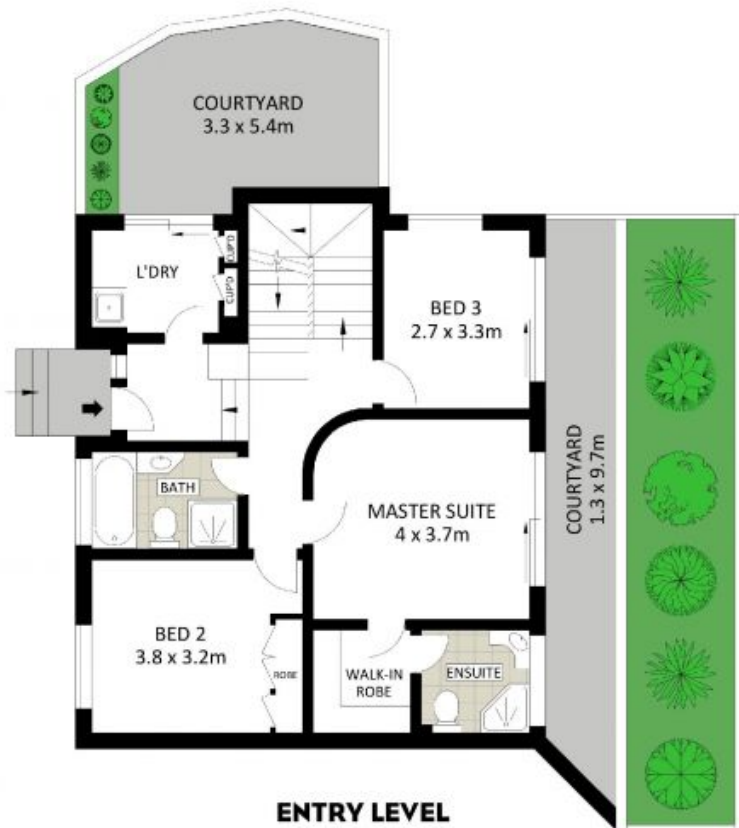
2

Commanding a gloriously elevated North-Easterly aspect, with light on all four sides, this property offers stunning and uninterrupted panoramic water views across Middle Harbour to North Head and beyond. This outstanding apartment boasts the entire top floor and is generously proportioned over two living levels within a boutique building of only four.



**Marize Bellomo**

0414 972 203



Scale in meters. Indicative only. Dimensions are approximate. All information contained herein is gathered from resources we believed to be reliable. However we cannot guarantee its accuracy and interested persons should rely on their own enquiries.

TOP FLOOR INCL. TERRACE: 144m<sup>2</sup>  
 APPROX. ENTRY LEVEL INCL. COURTYARD: 130m<sup>2</sup>  
 APPROX. DOUBLE LOCK-UP GARAGE PLUS STORAGE: 49m<sup>2</sup>  
 APPROX. TOTAL AREA: 323m<sup>2</sup>



**4/18 Parriwi Road, Mosman**