



7 Vulture Street Ellalong, NSW



Executive living on a grand scale

Superb in both its design and quality inclusions, this Beechwood residence is a testament to high calibre excellence. Showcasing flawless attention to detail, magnificent living and bedroom accommodation, fabulous indoor/outdoor entertaining plus the convenience of a separate studio with bathroom, it's enhanced by its location within the burgeoning community of Ellalong.

Price: \$720,000



Michael Hurley

0491 012 003

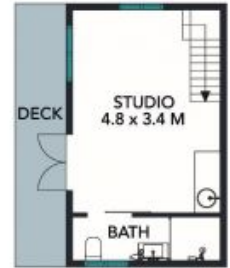


The floor plan is not to scale, measurements are indicative and in meters. All features included in this 3D plan are for inspiration purposes only. This is not an exact replica of the property or the position of exterior elements. Plans should not be relied on. Interested parties should make and rely on their own enquiries.

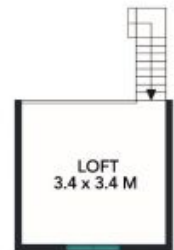
Produced by DIAKRIT



SITE PLAN



(NOT IN POSITION)



(NOT IN POSITION)

TOTAL LAND AREA : 4040 SQM
 TOTAL LIVING AREA : 234 SQM

The site plan and floor plan are not to scale, measurements are indicative and in metres. Bushes and trees are placed for illustration purposes. Plans should not be relied on. Interested parties should make and rely on their own enquiries.



Produced by DIAKRIT