



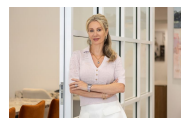
12/3 Mosman Street Mosman, NSW



Sydney Harbour Panorama

Perfectly positioned on the top floor of a tightly held and well-maintained strata development perched above Mosman Bay, this sun-filled two-bedroom apartment enjoys magnificent and uninterrupted views of Mosman Bay, the city skyline and Sydney Harbour.

Price: SOLD
Water Rates: \$179.06 p/q
Strata Rates: \$1,252.85 p/q



Marize Bellomo

0414 972 203



The floor plan is not to scale; measurements are indicative and in metres. All features included in this 3D plan are for inspiration purposes only. This is not an exact replica of the property or the position of exterior elements. Plans should not be relied on. Interested parties should make and rely on their own enquiries.

12/3 Mosman Street, Mosman
stonerealestate.com.au

Produced by DIAKRIT

UNDERCOVER PARKING
2.4 x 5.4 M

(NOT IN POSITION)



The floor plan is not to scale; measurements are indicative and in metres. Exterior elements are not in position. Plans should not be relied on. Interested parties should make and rely on their own enquiries.

12/3 Mosman Street, Mosman
stonerealestate.com.au

Produced by DIAKRIT