

5/27 Boyle Street Balgowlah, NSW      2       1       2 

### Light & bright convenient townhouse

Ideally located, this east facing double brick townhouse is quietly positioned in a sought-after complex just a short level stroll from the heart of Balgowlah. The home features direct private access to a secure walled courtyard bathed in morning sun, perfect for relaxation or entertaining, and flows to a shared garden area at the rear. Only footsteps to city/Manly buses, Stockland shops and a choice of restaurants, it holds immense appeal for young couples or downsizers and is exceptionally convenient.

**Price:** Deposit taken  
**Available Date:** 30/08/2019



**Todd Baker**  
0407 795 090



BASEMENT



FIRST FLOOR



GROUND FLOOR

The floor plan is not to scale; measurements are indicative and in metres. Exterior elements are not in position. Plans should not be relied on. Interested parties should make and rely on their own enquiries.

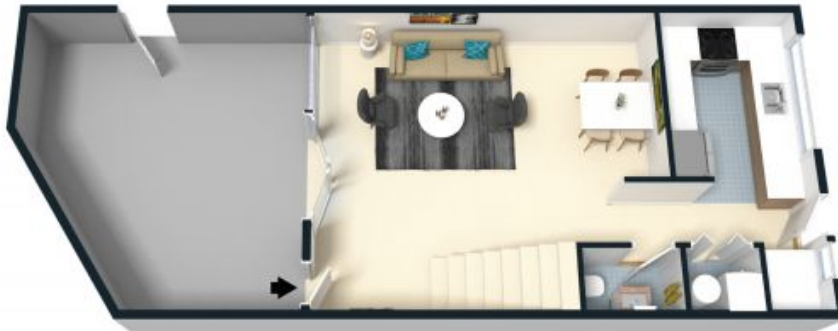




BASEMENT



FIRST FLOOR



GROUND FLOOR



The floor plan is not to scale; measurements are indicative and in metres. All features included in this 3D plan are for inspiration purposes only. This is not an exact replica of the property or the position of exterior elements. Plans should not be relied on. Interested parties should make and rely on their own enquiries.

5/27 Boyle Street, Balgowlah  
stonerealestate.com.au

Produced by DIAKRIT