

11 Dalrymple Crescent Pymble, NSW 5 [bed icon] 2 [bath icon] 1 [car icon]

Idyllic family haven backing onto bush reserve

Set on 999sqm in a tranquil pocket of Pymble's exclusive east-side, this tightly-held family home enjoys seamless flow from all living areas and most bedrooms to a choice of alfresco settings, private leafy outlooks and an easy-care bush garden. Already updated, there is still potential to cosmetically refine and capitalise on its location moments to buses, schools and shops.

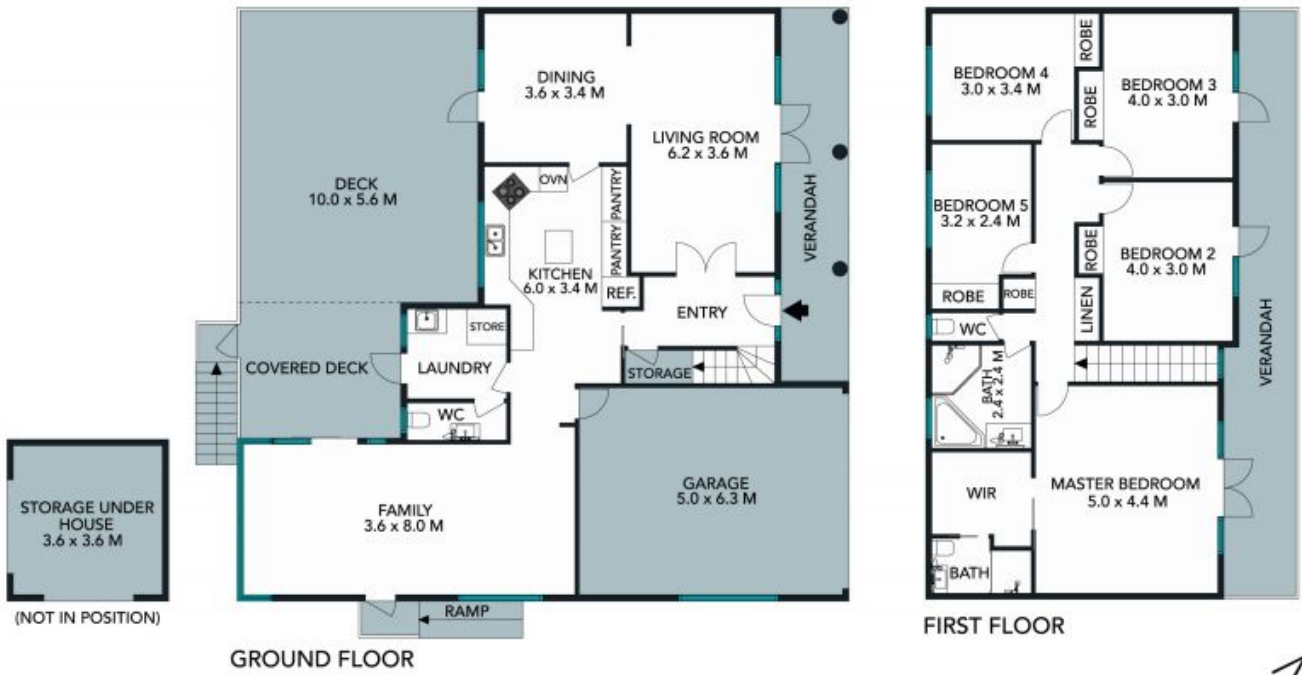
Price: Contact Agent



Greg Mooney 0413 384 545



Donna Fischer 0424 163 144



The floor plan is not to scale; measurements are indicative and in metres. Exterior elements are not in position. Plans should not be relied on. Interested parties should make and rely on their own enquiries.





GROUND FLOOR



FIRST FLOOR



The floor plan is not to scale; measurements are indicative and in metres. All features included in this 3D plan are for inspiration purposes only. This is not an exact replica of the property or the position of exterior elements. Plans should not be relied on. Interested parties should make and rely on their own enquiries.

11 Dalrymple Crescent, Pymble
 stonerealestate.com.au

Produced by DIAKRIT