



13 Spofforth Street Warilla, NSW

3

1

1

Cherished family home exudes future potential

Cherished for years, this neatly presented family home exudes exciting future potential for a complete transformation, update or rebuild (STCA). Positioned across a level 563sqm parcel of land in the heart of Warilla, it enjoys gourmet cafes, local shops and an array of convenient daily amenities just footsteps away, with quality schools also in close proximity.

Price: \$405,000



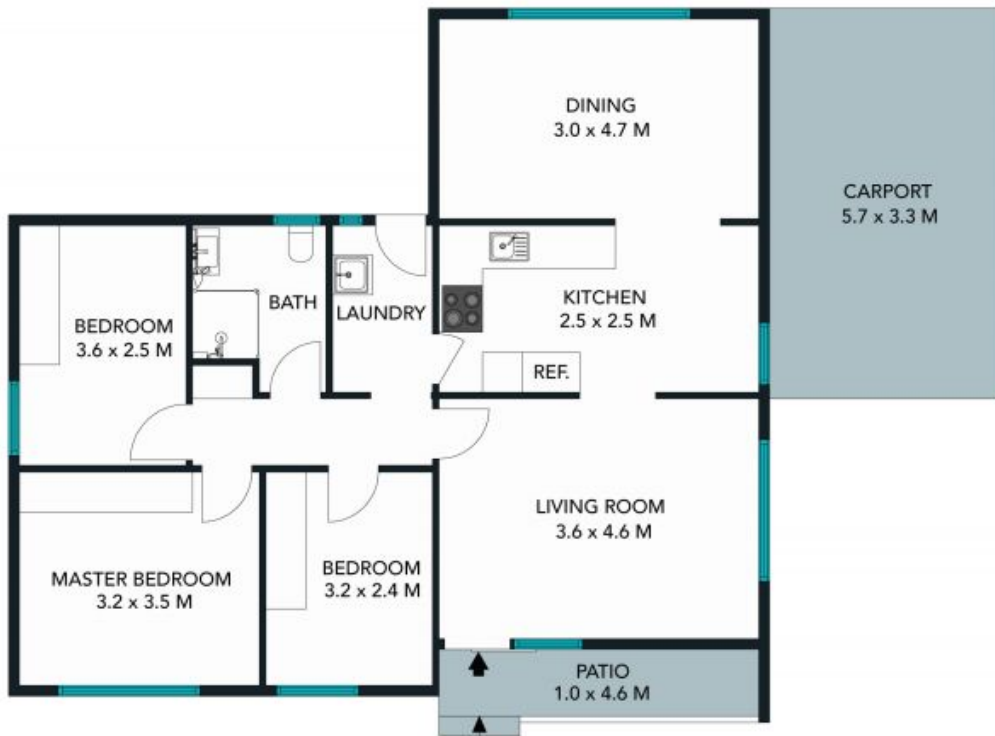
Michael Schlegel

0418 627 220



Victoria Kolevski

02 4228 1622



The floor plan is not to scale; measurements are indicative and in metres. Exterior elements are not in position. Plans should not be relied on. Interested parties should make and rely on their own enquiries.



13 Spofforth Street, Warilla
stonerealestate.com.au

Produced by DIAKRIT



The floor plan is not to scale; measurements are indicative and in metres. All features included in this 3D plan are for inspiration purposes only. This is not an exact replica of the property or the position of exterior elements. Plans should not be relied on. Interested parties should make and rely on their own enquiries.

13 Spofforth Street, Warilla
stonerealestate.com.au

Produced by DIAKRIT