



1/140 Addison Road Manly, NSW 3 2 2

North facing apartment nestled on the Eastern Hill

Price: \$2,705,000

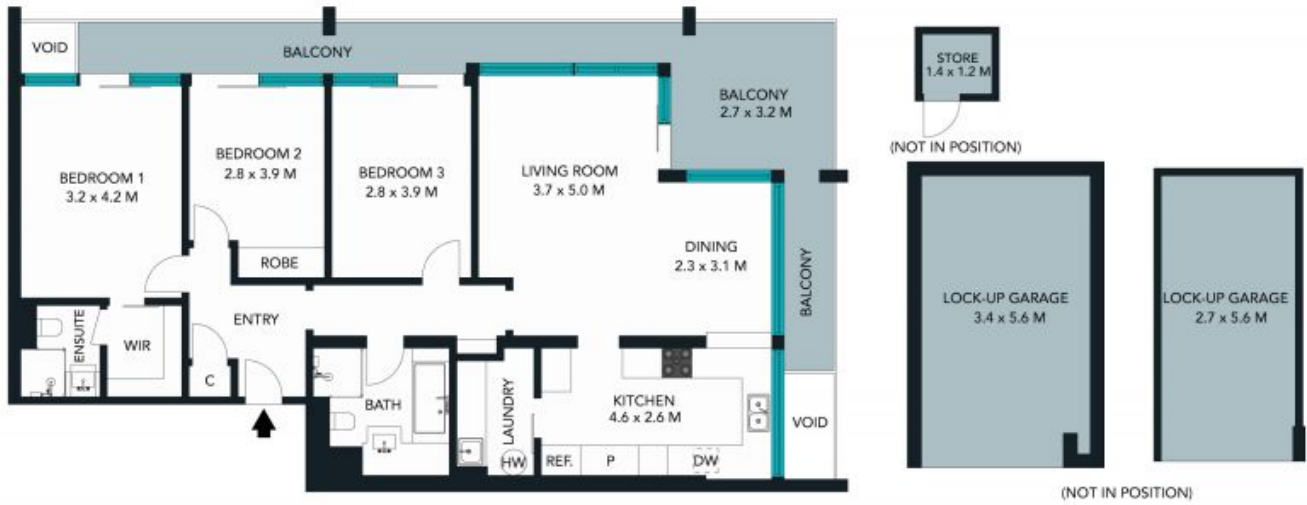
Located on Manly's prestigious Eastern Hill, this stunning 'Marlborough Gardens' apartment offers ample space, bespoke finishes and scenic ocean views. Moments to a choice of beaches, it promises an idyllic lifestyle with a sought-after address.



Adam Moore
0428 319 096



Mark Skeens
0401 241 381



TOTAL SQM ON TITLE : 150 SQM

The floor plan is not to scale; measurements are indicative and in metres. Exterior elements are not in position. Plans should not be relied on. Interested parties should make and rely on their own enquiries.



1/140 Addison Road, Manly
 stonerealestate.com.au

Produced by DIAKRIT



The floor plan is not to scale; measurements are indicative and in metres. All features included in this 3D plan are for inspiration purposes only. This is not an exact replica of the property or the position of exterior elements. Plans should not be relied on. Interested parties should make and rely on their own enquiries.

1/140 Addison Road, Manly
stonerealestate.com.au

Produced by DIAKRIT