



506/2-12 Smail Street Ultimo, NSW

2 2 1

### Light filled top floor living with sweeping views

Step straight out the front door of this bright and airy apartment into Ultimo's vibrant lifestyle scene with Broadway shops, cafes and dining options just around the corner. Situated in The Mark warehouse conversion, it features a stylish single level layout with good quality finishes, lots of natural light and sweeping views over the surrounding area. Its exclusive top floor setting offers the best of both worlds for low-maintenance lifestyle seekers and smart investors with a modern design, good security and excellent city-edge positioning.

Price: Deposit taken  
Available Date: 20/09/2019



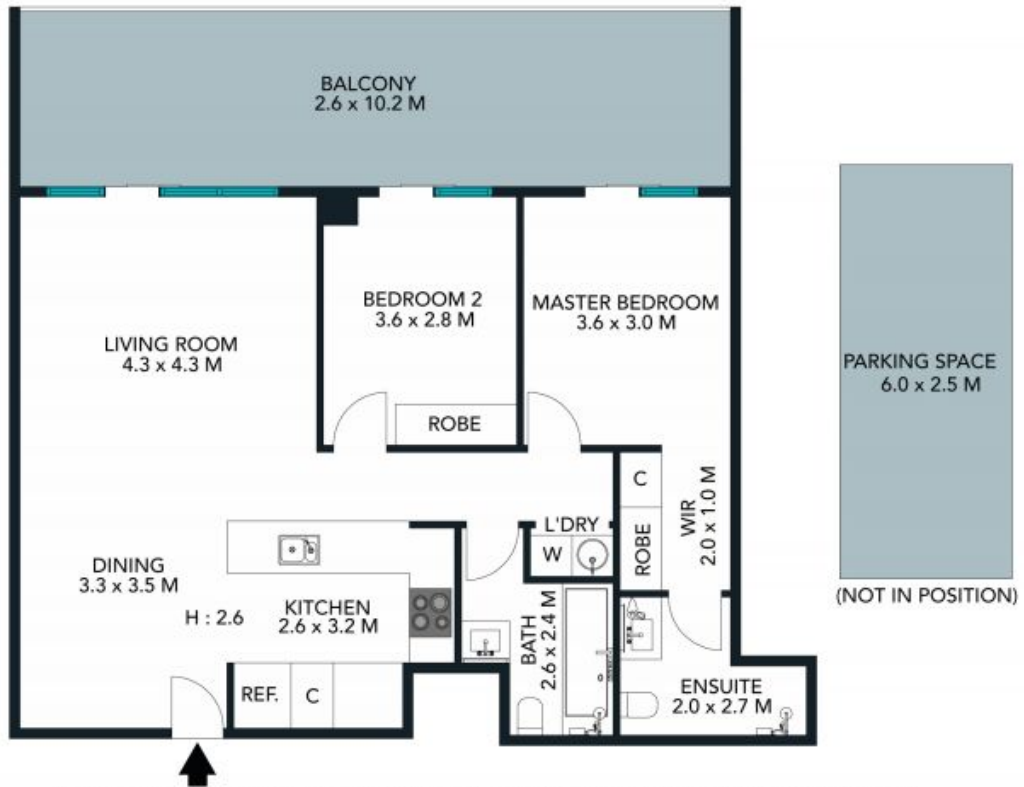
**Adrian Vassallo**

0406 484 994



**Koxan Oey**

0422 004 969



The floor plan is not to scale; measurements are indicative and in metres. Exterior elements are not in position. Plans should not be relied on. Interested parties should make and rely on their own enquiries.

506/2-12 Smail Street, Ultimo  
stonerealestate.com.au

Produced by DIAKRIT



The floor plan is not to scale; measurements are indicative and in metres. All features included in this 3D plan are for inspiration purposes only. This is not an exact replica of the property or the position of exterior elements. Plans should not be relied on. Interested parties should make and rely on their own enquiries.

**506/2-12 Smail Street, Ultimo**  
stonerealestate.com.au

Produced by DIAKRIT