



16A/70 Alfred Street Milsons Point, NSW

3

2

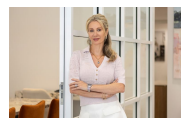
2

### Harbour living at it's finest

A rare offering in highly regarded 'Grandview' above Lavender Bay, this tightly held three-bedroom apartment claims a superbly elevated position featuring uninterrupted views over the harbour from McMahons Point and Balmain to the Anzac Bridge, Walsh Bay and Barangaroo. It assures a lifestyle of opulence and prestige in one of the area's most desirable developments.

Price:

Contact Agent

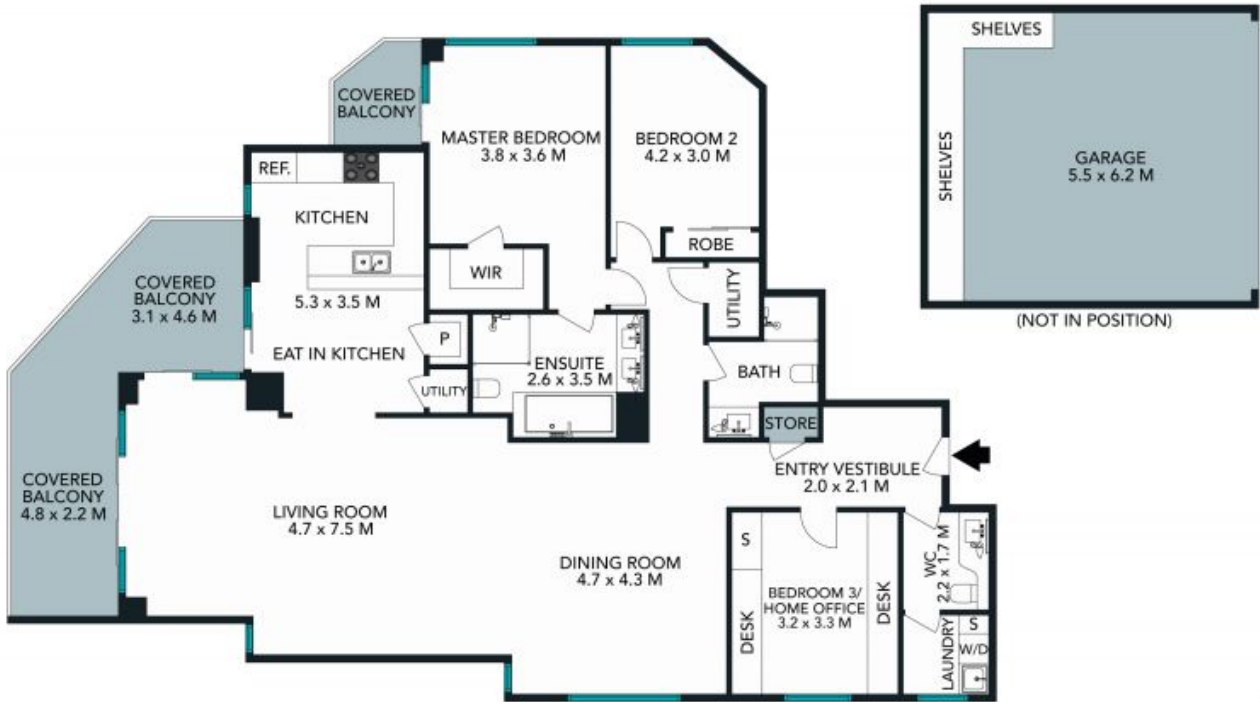


**Marize Bellomo**

0414 972 203



**Mark Jones**



TOTAL SQM ON TITLE : 224 SQM The floor plan is not to scale; measurements are indicative and in metres. Exterior elements are not in position. Plans should not be relied on. Interested parties should make and rely on their own enquiries.



16A/70 Alfred Street, Milsons Point  
 stonerealestate.com.au

Produced by DIAKRIT



The floor plan is not to scale; measurements are indicative and in metres. All features included in this 3D plan are for inspiration purposes only. This is not an exact replica of the property or the position of exterior elements. Plans should not be relied on. Interested parties should make and rely on their own enquiries.

**16A/70 Alfred Street, Milsons Point**  
stonerealestate.com.au

Produced by DIAKRIT