



306/76 Gordon Crescent Lane Cove, NSW

3 

2 

2 

Sophisticated executive living in parkside setting

Enjoying a privately elevated position on level three of an ultra-contemporary development opposite Barren Reserve. Completed in 2013 and located in "Eleeza", this oversized apartment showcases luxurious quality and is peacefully located with easy access to Mowbray Road and Epping Road shops and transport, schools and Lane Cove village.

- Massive 167sqm on title, 133sqm internally
- Featuring a spacious open design providing effortless living and entertaining
- Relaxed flow to huge undercover balcony with private leafy outlook to reserve
- Sleek kitchen with CaesarStone benchtops, quality appliances and gas cooking
- 3 enormous bedrooms with buildins, master has full ensuite and exclusive courtyard
- Additional practical, dedicated study area, fully tiled main bathrooms
- Shadowline ceilings, exquisite oak flooring, gas and ducted air conditioning
- Lift access to security parking for two cars side-by-side and massive lock-up storage

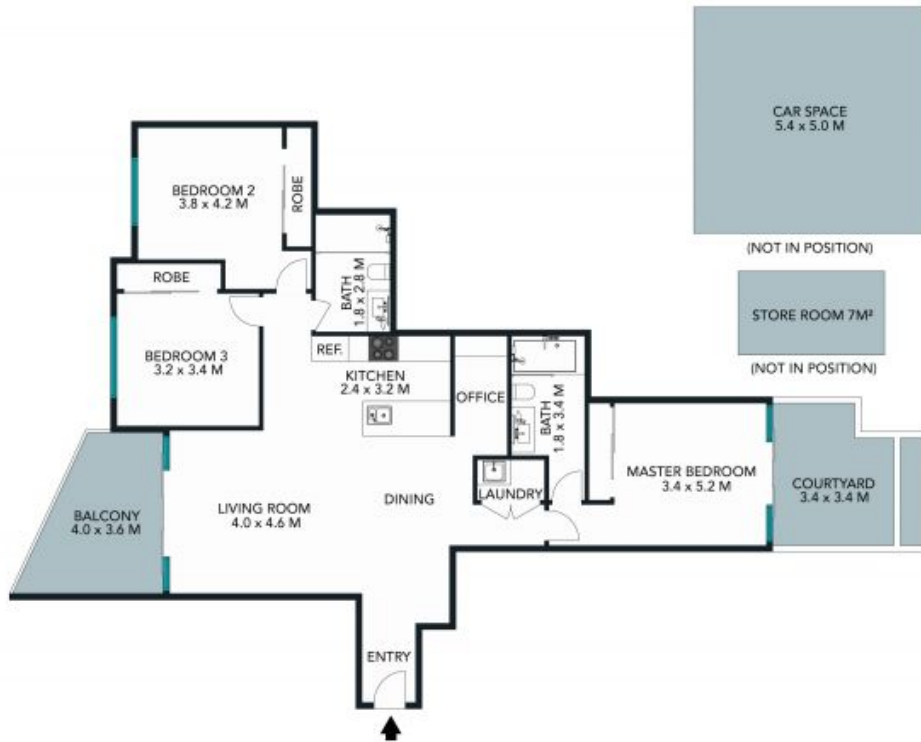
Price:

Contact Agent



Terase Calligeros

0418 245 874



TOTAL SQM ON TITLE : 169 SQM The floor plan is not to scale; measurements are indicative and in metres. Exterior elements are not in position. Plans should not be relied on. Interested parties should make and rely on their own enquiries.



B306/76 Gordon Crescent, Lane Cove
 stonerealestate.com.au

Produced by **DIAKRIT**



The floor plan is not to scale; measurements are indicative and in metres. All features included in this 3D plan are for inspiration purposes only. This is not an exact replica of the property or the position of exterior elements. Plans should not be relied on. Interested parties should make and rely on their own enquiries.

B306/76 Gordon Crescent, Lane Cove
stonerealestate.com.au

Produced by **DIAKRIT**