



18 Belmore Street Surry Hills, NSW

5 3 2

Oversized updated terrace

Enjoying an abundance of natural light throughout, this versatile floorplan offers both spacious interiors and entertainment space throughout. Perfectly positioned within moment's Walk to Central station, Prince Alfred Park swimming pool, a selection of restaurant offerings and the CBD

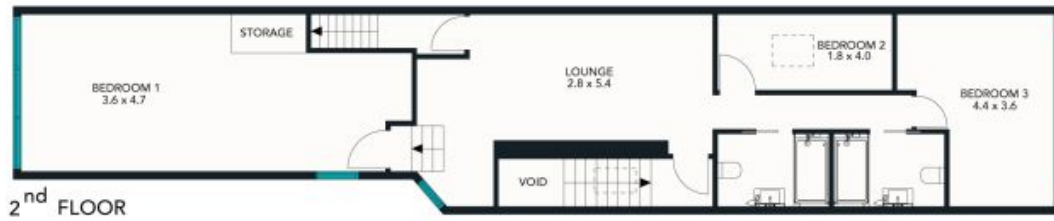
Price: Deposit taken

Available Date: 14/09/2019



Adrian Vassallo

0406 484 994



The floor plan is not to scale; measurements are indicative and in metres. Exterior elements are not in position. Plans should not be relied on. Interested parties should make and rely on their own enquiries.

18 Belmore Street, Surry Hills
stonerealestate.com.au

Produced by DIAKRIT