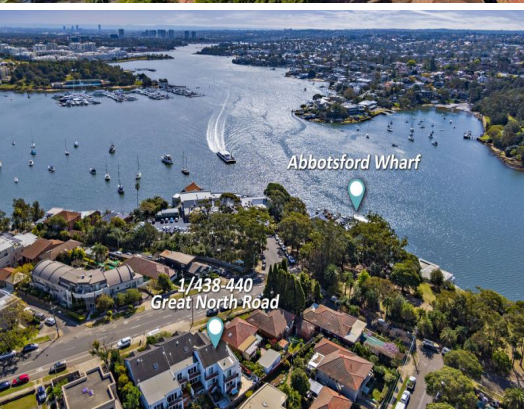




1/438-440
Great North Road



1/438 Great North Road Abbotsford, NSW



Brilliant Foreshore Lifestyle

Designed to maximise glittering water and gun-barrel CBD/Harbour Bridge views, this superbly re-imagined dual-level executive townhouse boasts sleek contemporary inclusions and finishes and numerous other premium features to create a haven of seamless indoor/alfresco living and exceptional entertaining in this high-end foreshore lifestyle hub.

Price:

Contact Agent



Phillip Massa

0411 173 929



Christian Leung

0423 555 162



GROUND FLOOR



FIRST FLOOR



SECOND FLOOR/ATTIC



BASEMENT/CARPARK

The floor plan is not to scale; measurements are indicative and in metres. All features included in this 3D plan are for inspiration purposes only. This is not an exact replica of the property or the position of exterior elements. Plans should not be relied on. Interested parties should make and rely on their own enquiries.

1/438-440 Great North Road, Abbotsford
stonerealestate.com.au

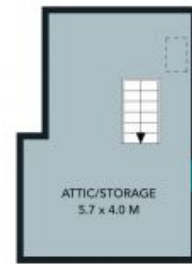

Produced by DIAKRIT



GROUND FLOOR



FIRST FLOOR



SECOND FLOOR/ATTIC



BASEMENT/CARPARK



The floor plan is not to scale; measurements are indicative and in metres. Exterior elements are not in position. Plans should not be relied on. Interested parties should make and rely on their own enquiries.

1/438-440 Great North Road, Abbotsford
 stonerealestate.com.au

Produced by DIAKRIT