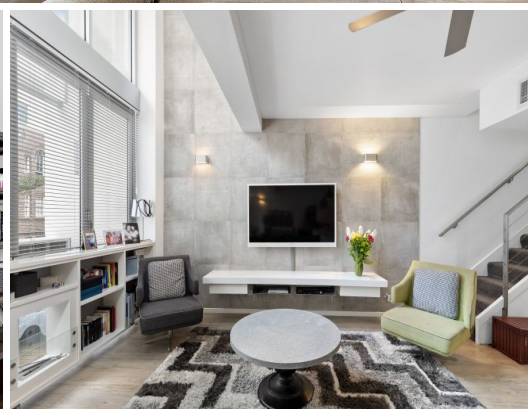


STONE



105/2 Wentworth Street Manly, NSW

3 

3 

2 

Vogue village living between the harbour and beach

Innovative contemporary design, expansive light filled interiors and bespoke designer finishes define this vibrantly modern "town house-like" apartment set in the thriving heart of Manly Village. Flowing over two levels with giant walls of glass and a wide deck capturing the northerly winter sun, its unbeatable lifestyle setting is footsteps to beaches, the wharf and eateries.

- Set within 'Kai', a master-built full brick security building with lift access
- Extensive living space with separate dining and double-height north glass wall
- Glass bi-folds open to extra-wide northerly sundeck, two balconies at the rear
- Deluxe CaesarStone kitchen with gas stove and dishwasher, stylish bathrooms
- Oversize bedrooms with built-ins, main and guest have ensuites, laundry with w/c
- Ducted air conditioning, bespoke finishes, volumes of storage, gas BBQ outlet
- Beautifully landscaped block with palms, ponds and water features, pet-friendly
- Double security parking, lock-up storage, 194sqm on title, video security intercom

Price:

Contact Agent



Candice Cattell

0417 311 777

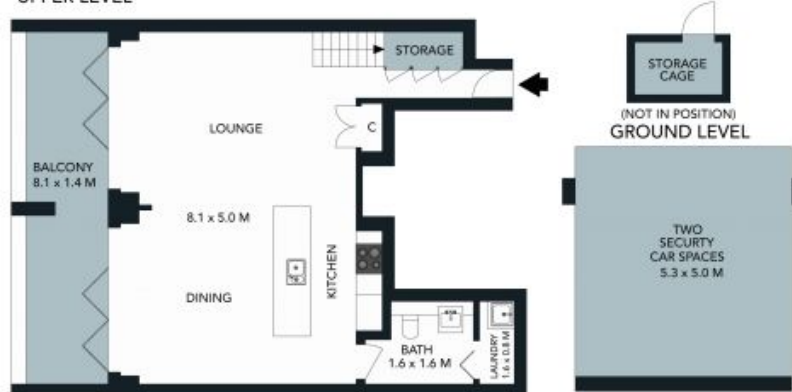


Laura Stenta

0404 307 166



UPPER LEVEL



LEVEL ONE

BASEMENT LEVEL

The floor plan is not to scale, measurements are indicative and in metres. Exterior elements are not to position. Plans should not be relied on. Interested parties should make and rely on their own enquiries.



105/2-4 Wentworth Street, Manly

STONE



UPPER LEVEL



LEVEL ONE



BASEMENT LEVEL

The floor plan is not to scale; measurements are indicative and in metres. All features included in this 3D plan are for inspiration purposes only. This is not an exact replica of the property or the position of exterior elements. Plans should not be relied on. Interested parties should make and rely on their own enquiries.



105/2-4 Wentworth Street, Manly

