



1/140 Addison Road Manly, NSW      3      2      2

### North facing apartment nestled on the Eastern Hill

Located on Manly's prestigious Eastern Hill, this stunning 'Marlborough Gardens' apartment offers ample space, bespoke finishes and scenic ocean views. Moments to a choice of beaches, it promises an idyllic lifestyle with a convenient address.

**Price:** Holding deposit taken  
**Bond:** \$5,580  
**Available Date:** 30/10/2019



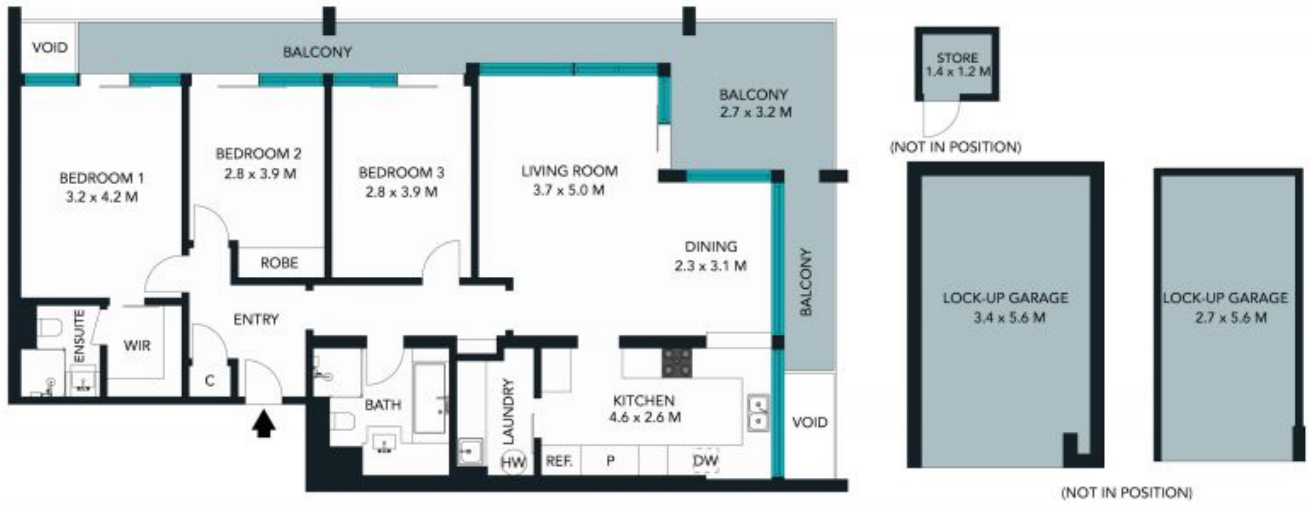
**Zoe Thackeray**

0449 167 420



**Zoe Thackeray**

0449 167 420



TOTAL SQM ON TITLE : 150 SQM

The floor plan is not to scale; measurements are indicative and in metres. Exterior elements are not in position. Plans should not be relied on. Interested parties should make and rely on their own enquiries.

1/140 Addison Road, Manly  
 stonerealestate.com.au

Produced by DIAKRIT



The floor plan is not to scale; measurements are indicative and in metres. All features included in this 3D plan are for inspiration purposes only. This is not an exact replica of the property or the position of exterior elements. Plans should not be relied on. Interested parties should make and rely on their own enquiries.

1/140 Addison Road, Manly  
stonerealestate.com.au

Produced by DIAKRIT