



2 The Crescent North Narrabeen, NSW

3

1

3

Gardener's Delight

This charming property presents 'as neat as a pin', all within walking distance to shops, schools, bus, beach and lakeside. Enveloped by a beautiful garden full of classic shrubs, fruit trees, coffee trees and herbs. A keen gardener will appreciate the time and love displayed here.

A solid brick and tile home, offers easy level living and is fully prepared for wheel chair access. This home suits a myriad of people from downsizer's to first house buyers, families, investors and those wanting to extend on what is already here.

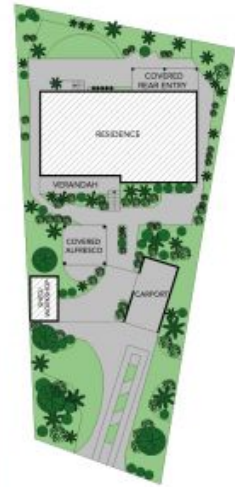
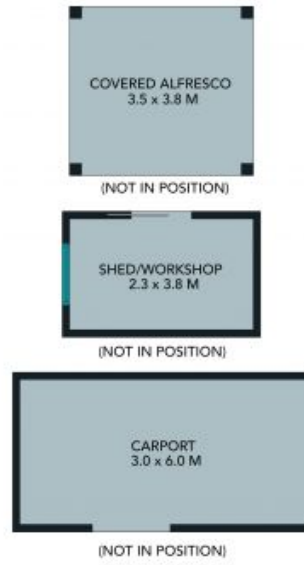
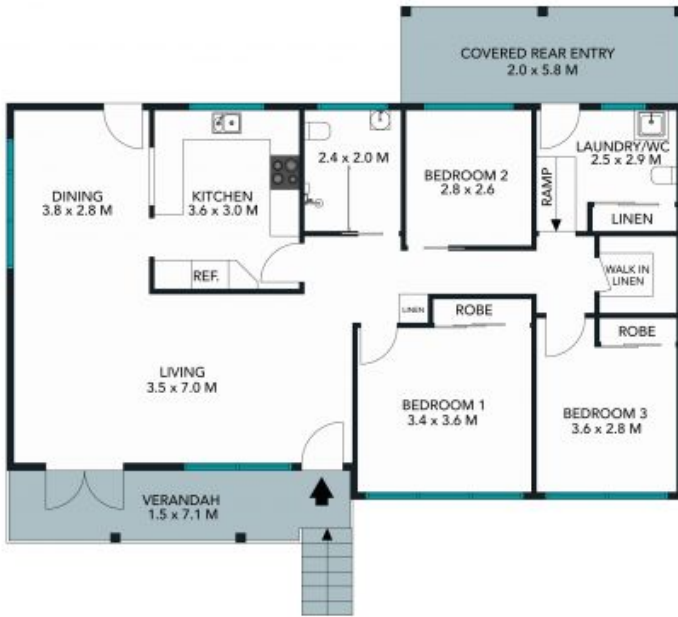
The living area is an L shaped plan with the renovated kitchen adjacent. This is completed with a server bar, abundant storage drawers and chic appliances. Further to this three bedrooms are located off a central hallway, as is the well proportioned bathroom. The laundry adds a second w/c and accesses the rear courtyard and gardens.

Price: \$1,377,000

Council Rates: \$501.22 p/q

Stone Mona Vale

02 8030 8549



SITE PLAN

The site plan and floor plan are not to scale, measurements are indicative and in metres. Studies and trees are placed for illustration purposes. Plans should not be relied on. Interested parties should make and rely on their own enquiries.



2 The Crescent, North Narrabeen





The floor plan is not to scale, measurements are indicative and in metres. All features included in this 3D plan are for inspiration purposes only. This is not an exact replica of the property or the position of exterior elements. Plans should not be relied on. Interested parties should make and rely on their own enquiries.

2 The Crescent, North Narrabeen



STONE