

19 Serpentine Crescent North Balgowlah, NSW



Sleek, stylish and spacious, the ultimate executive retreat

Defined by its extraordinary proportions, superb contemporary appointments and stunning outdoor entertaining areas, this spectacular tri-level residence is ideal for families or executives who crave a sophisticated yet relaxed low maintenance lifestyle. With sweeping living spaces on each level, it is comprised of a formal living room, massive family room and casual dining space that open to a covered entertainers' patio, private level lawns and garden, huge upstairs TV/living room that opens to a private balcony and a loft retreat that blankets the entire top floor.

Price: Deposit taken

Available Date: 20/11/2019



Todd Baker

0407 795 090



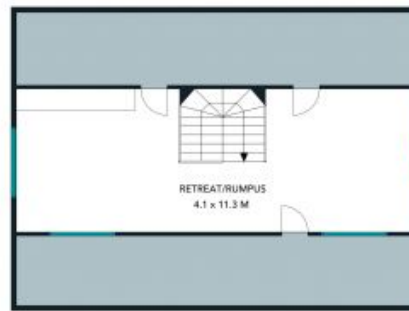
(NOT IN POSITION)



GROUND FLOOR



LEVEL 1



LEVEL 2



The floor plan is not to scale, measurements are indoors and in metres. Exterior elements are not in position. Plans should not be relied on. Interested parties should make and rely on their own enquiries.

19 Serpentine Crescent ,North Balgowlah





The floor plan is not to scale, measurements are indicative and in metres. All features included in this 3D plan are for inspiration purposes only. This is not an exact replica of the property or the position of exterior elements. Plans should not be relied on. Interested parties should make and rely on their own enquiries.

19 Serpentine Crescent ,North Balgowlah

