



105 Grosvenor Road Lindfield, NSW 5 3 2

**Peaceful family haven in idyllic bush setting**

Enviably positioned on a sundrenched north-to-rear parcel and backing onto a leafy reserve, this inviting home features stylish light and airy interiors, gorgeous bush outlooks and a choice of tranquil alfresco entertaining settings. A stroll to stunning Lane Cove National Park and Lindfield Public, it is conveniently located for buses to rail, shops, Chatswood and North Ryde CBDs.

**Price:** Contact Agent



**Steven Kourdis**

0402 555 675

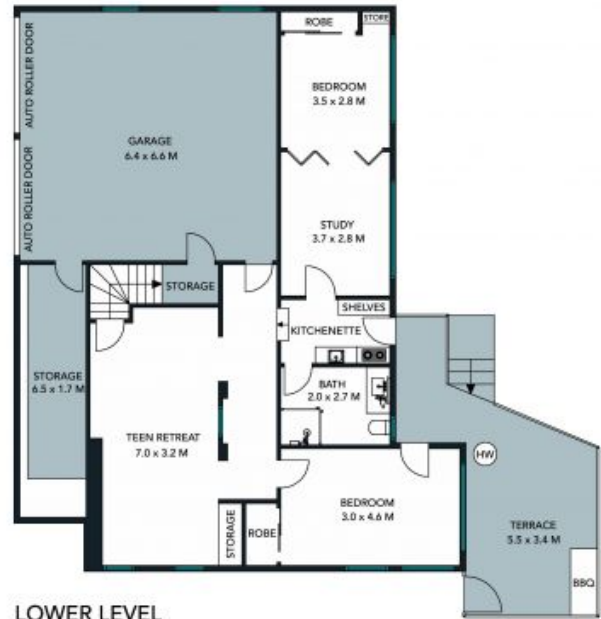


**Ryan Woo**

0410 884 680



LEVEL ENTRY



LOWER LEVEL



The floor plan is not to scale, measurements are indicative and in metres. Exterior elements are not in position. Plans should not be relied on. Interested parties should make and rely on their own enquiries.

105 Grosvenor Road, Lindfield





LEVEL ENTRY



LOWER LEVEL



The floor plan is not to scale, measurements are indicative and in metres. All features included in this 3D plan are for inspiration purposes only. This is not an exact replica of the property or the position of exterior elements. Plans should not be relied on. Interested parties should make and rely on their own enquiries.

105 Grosvenor Road, Lindfield

