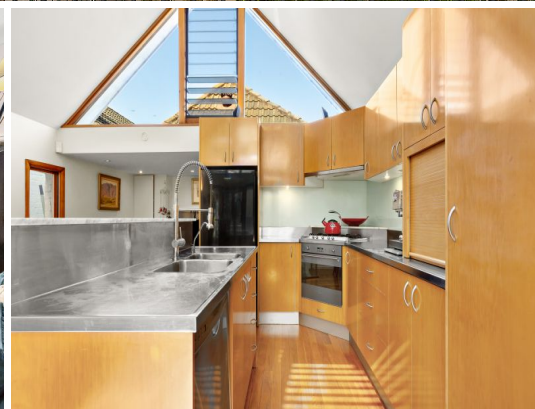
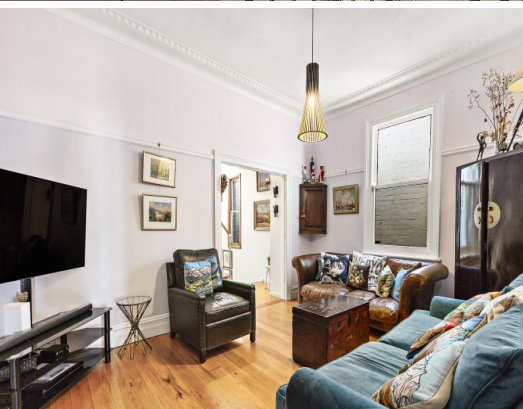


STONE



30 John Street Petersham, NSW

3 

2 

A classic haven with surprises of space, light & style

Behind the traditional facade of this attractive Victorian home lies a cleverly designed interior that is surprisingly spacious, bright and exceptionally private. Smartly reconfigured and extended to maximise the space and enhance natural light, it offers a unique multi-level family home with generous proportions, modern finishes and a leafy garden at the rear.

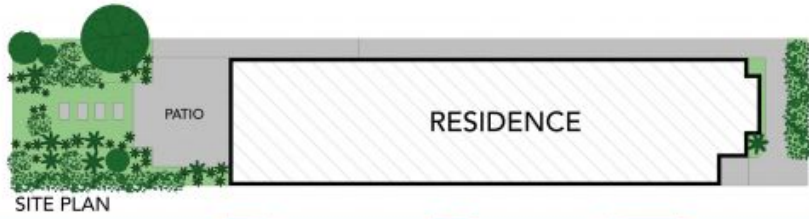
Price:

Contact Agent



Adrian Vassallo

0406 484 994



The site plan and floor plan are not to scale; measurements are indicative and in metres. Studies and trees are placed for illustrative purposes. Plans should not be relied on. Interested parties should make and rely on their own enquiries.



30 John Street, Petersham





ENTRY LEVEL



LOWER LEVEL

The floor plan is not to scale, measurements are indicative and in metres. All features included in this 3D plan are for inspiration purposes only. This is not an exact replica of the property or the position of exterior elements. Plans should not be relied on. Interested parties should make and rely on their own enquiries.

30 John Street, Petersham

