

17/15 O'Sullivan Road Leumeah, NSW 2 1 1

Perfectly Positioned.

This two bedroom ground floor unit is a great opportunity for first home buyers and investors. Only 250 metres from Leumeah station, this property is in a great position; also close to other amenities.

- Mirrored built in robes to both rooms
- Bright, spacious living and dining
- Access to balcony from dining
- Well-appointed kitchen with pantry
- Bathroom with combined bath and shower
- Split system air conditioning
- Separate internal laundry
- One carport and visitors parking available

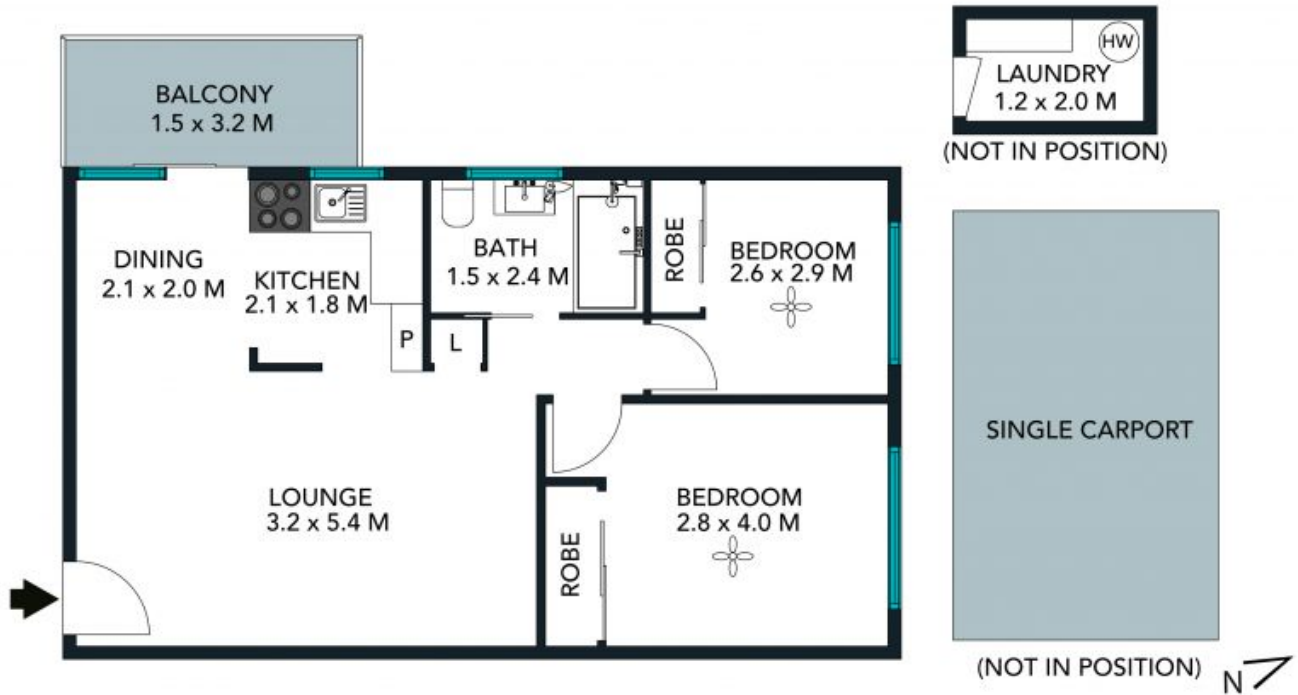
Price: \$265,000
Council Rates: \$1,134.00/year (approx)
Water Rates: \$689.00/year (approx)
Strata Rates: \$2,200.00/year (approx)



Rod Young
0412 797 719



Rod Young
0412 797 719



The floor plan is not to scale, measurements are indicative and in metres. Colour statements are not in position. Plans should not be relied on. Interested parties should make and rely on their own enquiries. All other information provided has been collected from reliable sources but cannot be guaranteed for accuracy.

17/15 O'Sullivan Rd, Leumeah

STONE



The floor plan is not to scale, measurements are indicative and in metres. All features included in this 3D plan are for inspiration purposes only. This is not an exact replica of the property or the position of exterior elements. Plans should not be relied on. Interested parties should make and rely on their own enquiries.

17/15 O'Sullivan Rd, Leumeah

