

15 Grandview Grove Seaforth, NSW



### Hampton's inspired family Oasis

A meticulous renovation and extension in keeping with its c1920s heritage has transformed this home and created a Hamptons inspired coastal oasis of remarkable space, quality and style. Placed in a premier street, it's a walk to Seaforth Village and schools.

- Magnificent living space with soaring ceilings and Sandstone fireplace
- Flow to large deck, landscaped garden, pool and paved entertaining area
- Chef's island kitchen with live gas stove, dishwasher and butlers' pantry
- Formal lounge, fitted study niche and sunroom/home office
- Four bedrooms, master with ensuite, main bathroom with luxurious claw foot bath
- North facing front garden, Middle Harbour views, internal entry to garage
- High ornate ceilings, leadlight windows, American oak floors, sandstone features
- Easy access to Mosman, Sydney CBD, Manly Ferry Wharf and Manly Beach

**Price:** Deposit taken

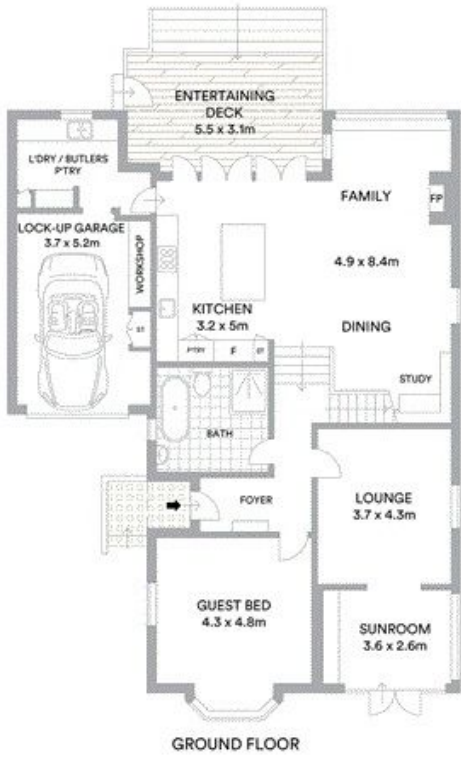
**Available Date:** 29/02/2020



**Todd Baker**

0407 795 090





Internal 215sqm  
 External 393sqm  
 Land area 556sqm

Scale in metres. Indicative only. All information contained herein is obtained from sources we believe to be accurate. We cannot guarantee its accuracy. Interested persons should make and rely on their own enquiries