



4/2d Battle Boulevard Seaforth, NSW

3 2 2

### Contemporary town home with Middle Harbour views

Perfectly positioned to take in views of Middle Harbour and The Spit, this stunning town home oozes effortless charm, striking the perfect balance of form and function. From its well-appointed finishes, seamless indoor/outdoor flow, to its multiple living and dining spaces, and its proximity to express city transport, Seaforth Village, cafes, and the famous Spit to Manly walk, this property is the ultimate executive lifestyle escape.

- Multiple living/dining spaces flow to charming private courtyards
- Stylish contemporary kitchen with gas cooking and dishwasher
- Three generous bedrooms, all with built -ins, master with ensuite
- Two full bathrooms, main with bath and shower, guest toilet downstairs
- Double lock up garage with internal access, air-conditioning throughout
- Express city transport at door, footsteps to Seaforth Village, shops and cafes

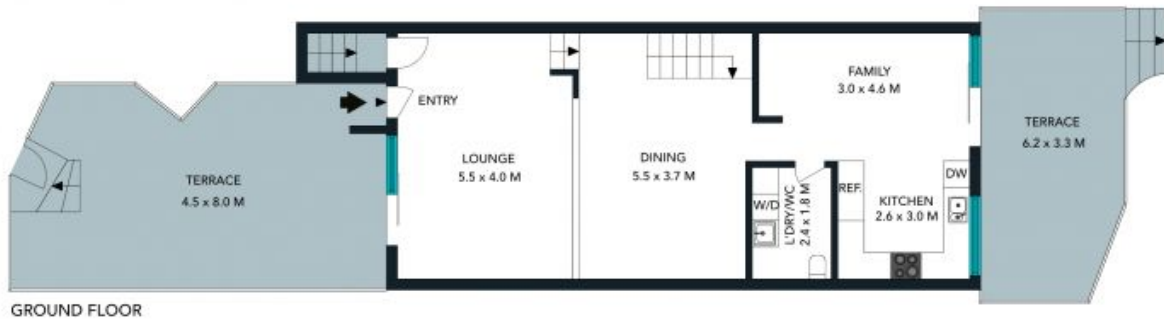
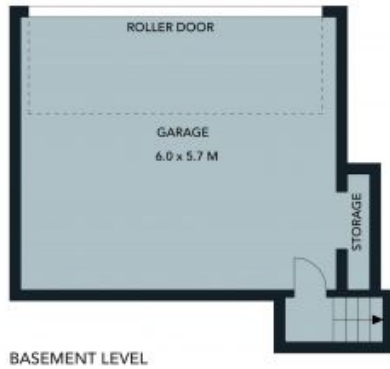
**Price:** Deposit taken

**Available Date:** 20/01/2020



**Todd Baker**

0407 795 090



The floor plan is not to scale, measurements are indicative and in metres. Colour elements are not to position. Plans should not be relied on. Interested parties should make and rely on their own enquiries. All other information provided has been collected from reliable sources but cannot be guaranteed for accuracy.

4/2d Battle Boulevard, Seaforth

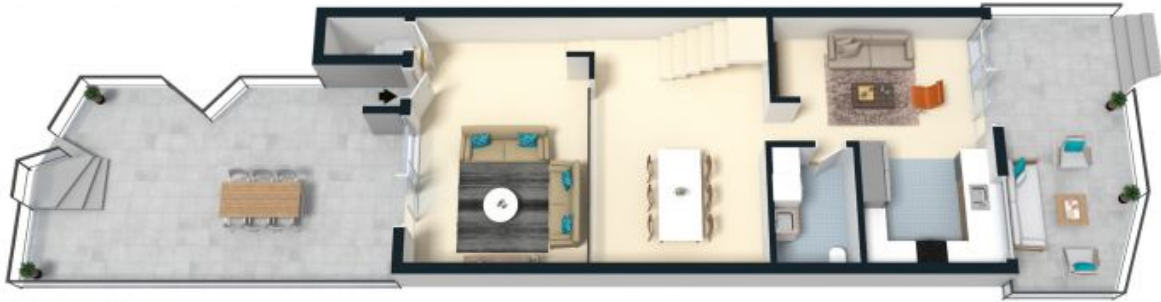




BASEMENT LEVEL



LEVEL 1



GROUND FLOOR

The floor plan is not to scale, measurements are indicative and in metres. All features included in this 3D plan are for inspiration purposes only. This is not an exact replica of the property or the position of exterior elements. Plans should not be relied on. Interested parties should make and rely on their own enquiries.

4/2d Battle Boulevard, Seaforth

