

1/50 Roseberry Street Manly Vale, NSW 3 1 1

### Capitalise on access to beaches and urban energy

Set in a boutique complex this spacious double-brick apartment is awash with natural light cascading over timber floors with cross breezes flowing through from all directions. A tranquil oasis in itself, this residence is at the epicentre of urban activity where everything from CBD connectivity to beaches, major shopping centres, parklands and cafes are all within easy reach.

**Price:** \$950,000



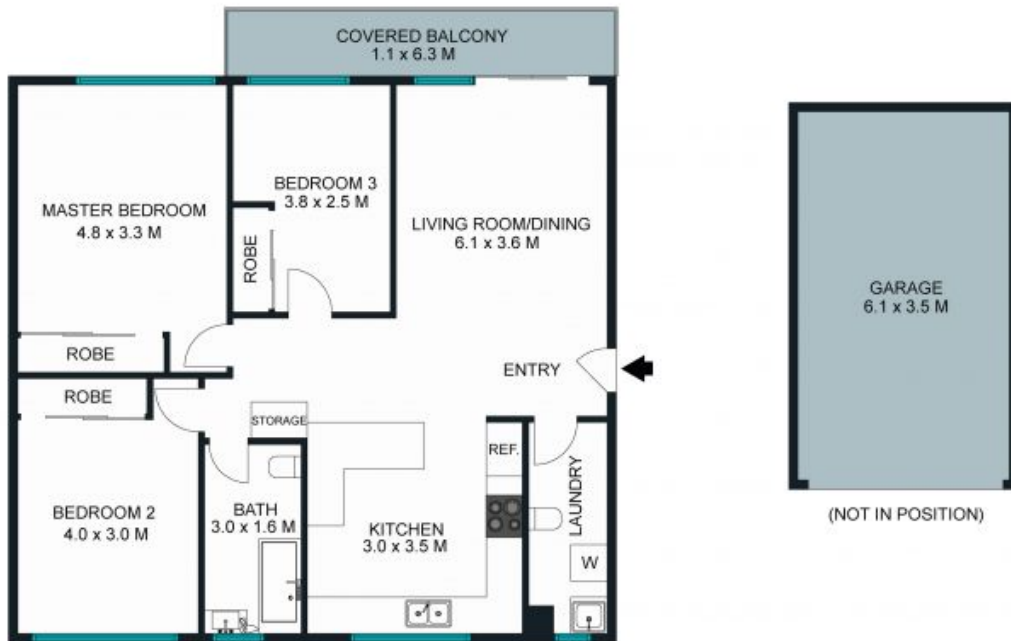
**Chris Elliott**

0410 416 066



**Louise Ashdown**

0414 764 108



The site plan and floor plan are not to scale, measurements are indicative and in metres. Balues and roses are placed for illustration purposes. Plans should not be relied on. Interested parties should make and rely on their own enquiries. All other information provided has been collected from reliable sources but cannot be guaranteed for accuracy.



1/50 Roseberry Street, Manly Vale





The floor plan is not to scale, measurements are indicative and in metres. All features included in this 3D plan are for inspiration purposes only. This is not an exact replica of the property or the position of exterior elements. Plans should not be relied on. Interested parties should make and rely on their own enquiries.

1/50 Roseberry Street, Manly Vale



STONE