



28 Yarrambat Rise Upper Coomera, QLD

3 1 2 2

Superb single level elegance

This near new, exquisite Clarendon built residence impressively showcases contemporary style, the latest designer finishes and impeccable quality throughout. Idyllically situated in one of Upper Coomera's finest and most highly regarded residential areas in Stocklands' Highland Reserve, this super-impressive single level residence has been designed to deliver classic elegance in an enticing low maintenance context.

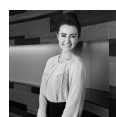
- Spacious master bedroom with walk-in robe, majestic stone ensuite with bath
- Additional 2 bedrooms with built-in robes and fans, shared second stone bathroom
- Fully equipped gourmet kitchen with black sparkle stone bench-tops, gas cooking
- Soft-close cabinetry, walk-in pantry, wide hallway, open plan living and dining zones
- Study-nook with built-in desk, smart wired throughout for data and TV, NBN
- Air-conditioning, ceiling fans, new LED lighting, freshly painted, 2Kw solar power
- Plantation shutters, separate large laundry, plumber rainwater tank, side access
- Under roof-line entertaining with mains gas point, low maintenance gardens

Price: \$510,000 - \$550,000
Council Rates: \$1,600.00/year (approx)
Water Rates: \$300.00 p/q



Shane Evans

0416 193 663



Sally Ann

0402 360 217



The floor plan is not to scale, measurements are indicative and in metres. All features included in this 3D plan are for inspiration purposes only. This is not an exact replica of the property or the position of exterior elements. Plans should not be relied on. Interested parties should make and rely on their own enquiries.

28 Yarrambat Rise, Upper Coomera





The floor plan is not to scale, measurements are indicative and in metres. Exterior elements are not in position. Plans should not be relied on. Interested parties should make and rely on their own enquiries. All other information provided has been collected from reliable sources but cannot be guaranteed for accuracy.



28 Yarrambat Rise, Upper Coomera

