



12/10 Cecil Avenue Castle Hill, NSW



Kaylina Gardens

Enjoy a sense of peace and sanctuary at Kaylina Gardens, offering a beautiful collection of just 22 architecturally designed boutique townhouses in one of Sydney's most sought after, well established neighbourhoods within the coveted Hills district.

Council Rates: \$334.00 p/q



KAYLINA GARDENS

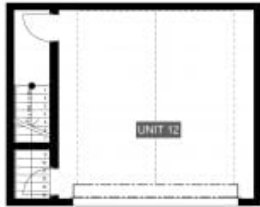
CASTLE HILL

10-16 CECIL AVENUE
CASTLE HILL

UNIT 12

UNIT AREA

INTERNAL	141 SQM
EXTERNAL	64 SQM
BASEMENT	43 SQM
TOTAL	248 SQM



BASEMENT



GROUND LEVEL



LEVEL 1



Disclaimer: Please note that this floor plan is a guide only and not intended to be used as a contract. The information contained herein is believed to be correct but is not guaranteed. Dimensions are approximate. Please refer to the contract for conditions, all dimensions, notes, and other applicable information. The information is provided as a guide only and is not intended to be used as a contract. The information is not intended to be used as a contract. The information is not intended to be used as a contract.

ISSUE W
19.02.2016