



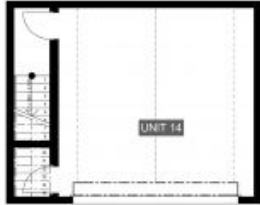
14/10 Cecil Avenue Castle Hill, NSW



Kaylina Gardens

Enjoy a sense of peace and sanctuary at Kaylina Gardens, offering a beautiful collection of just 22 architecturally designed boutique townhouses in one of Sydney's most sought after, well established neighbourhoods within the coveted Hills district.

Price: Sold
Council Rates: \$334.00 p/q



BASEMENT



GROUND LEVEL



LEVEL 1


KAYLINA GARDENS
CASTLE HILL

10-16 CECIL AVENUE
CASTLE HILL

UNIT 14

UNIT AREA

INTERNAL	141 SQM
EXTERNAL	64 SQM
BASEMENT	43 SQM
TOTAL	248 SQM



Disclaimer: Please note that this floor plan is a guide only and not intended to be used as a contract. The information contained herein is subject to change without notice. The information contained herein is intended for informational purposes only. The information contained herein is not intended to be used as a contract. The information contained herein is not intended to be used as a contract. The information contained herein is not intended to be used as a contract.