



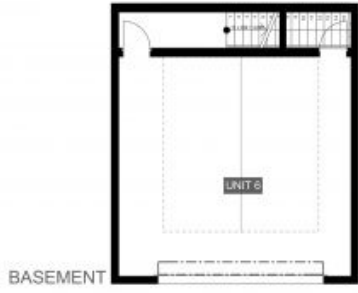
6/10 Cecil Avenue Castle Hill, NSW



Kaylina Gardens

Enjoy a sense of peace and sanctuary at Kaylina Gardens, offering a beautiful collection of just 22 architecturally designed boutique townhouses in one of Sydney's most sought after, well established neighbourhoods within the coveted Hills district.

Price: Sold
Council Rates: \$328.00 p/q



Disclaimer: Please note that this floor plan is a guide only and not intended to be used as a contract. Any dimensions shown are approximate and should be used for reference only. All dimensions, areas, heights and specifications may be subject to change without notice or responsibility on the part of the architect or engineer. The architect/engineer is not responsible for any errors or omissions on any plans. Please contact the architect/engineer for more information.



KAYLINA GARDENS

CASTLE HILL

10-16 CECIL AVENUE
CASTLE HILL

UNIT 6

UNIT AREA

INTERNAL	103 SQM
EXTERNAL	87 SQM
BASEMENT	58 SQM
TOTAL	248 SQM

