



16 Ryrie Street Mosman, NSW

5

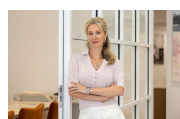
2

2

Grand family residence on rare landholding of 968sqm

Representing an exceptional opportunity to secure a large family home with wonderfully elevated views across Middle Harbour, this c1905 master built residence is more than liveable as-is, with plenty of scope to add further value. Discerning buyers will quickly understand how this beautifully solid home represents an idyllic opportunity to establish a dream home with sought-after village proximity and the architectural grace of a bygone era.

Price: \$4,375,000



Marize Bellomo

0414 972 203



Bruce N. Huang

0468 694 060

à,fé²•æ-é»,,



FIRST FLOOR



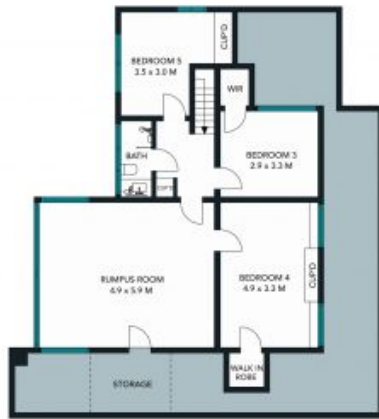
GROUND FLOOR

The floor plan is not to scale, measurements are indicative and in metres. All features included in this 3D plan are for inspiration purposes only. This is not an exact replica of the property or the position of exterior elements. Plans should not be relied on. Interested parties should make and rely on their own enquiries.

16 Ryrie Street, Mosman



STONE



FIRST FLOOR



GROUND FLOOR



SITE PLAN

The site plan and floor plan are not to scale, measurements are indicative and in meters. Bricks and trees are placed for illustration purposes. Plans should not be relied on. Interested parties should make and rely on their own enquiries. All other information provided has been collected from reliable sources but cannot be guaranteed for accuracy.

16 Ryrie Street, Mosman

