



28/29-31 Castlereagh Street Liverpool, NSW

3

2

2

Stunning top floor apartment

In Liverpool CBD we have a large open plan apartment. Great balconies with views and close to everything. Three bedrooms, two bathrooms and secure two parking. A must for first home buyer or investor.

Price: \$527,000



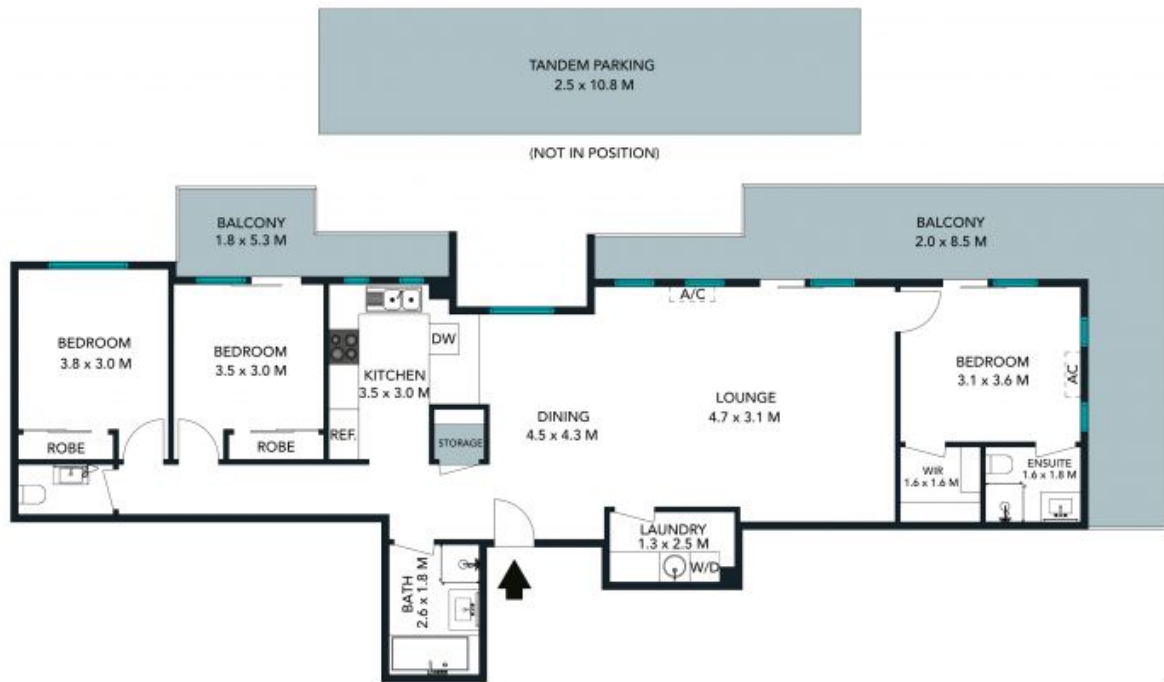
Rod Young

0412 797 719



Rod Young

0412 797 719



The floor plan is not to scale, measurements are indicative and in metres. Colour statements are not in position. Plans should not be relied on. Interested parties should make and rely on their own enquiries. All other information provided has been collected from reliable sources but cannot be guaranteed for accuracy.

28/29-31 Castlereagh St, Liverpool





The floor plan is not to scale, measurements are indicative and in metres. All features included in this 3D plan are for inspiration purposes only. This is not an exact replica of the property or the position of exterior elements. Plans should not be relied on. Interested parties should make and rely on their own enquiries.

28/29-31 Castlereagh St, Liverpool

