

10/189 Pacific Highway Lindfield, NSW 2 1 2

Space-rich and sun-flooded

A sun-swept open design, lovely big bedrooms and renovated interiors all contribute to the irresistible appeal of this superb first floor apartment sitting at the rear of a well-maintained security building. A sensational sanctuary for couples, young families, downsizers or investors, this stylishly renovated, and light-filled home is in the popular Lindfield Primary School zone and just a short stroll to Lindfield village, cafes and railway station.

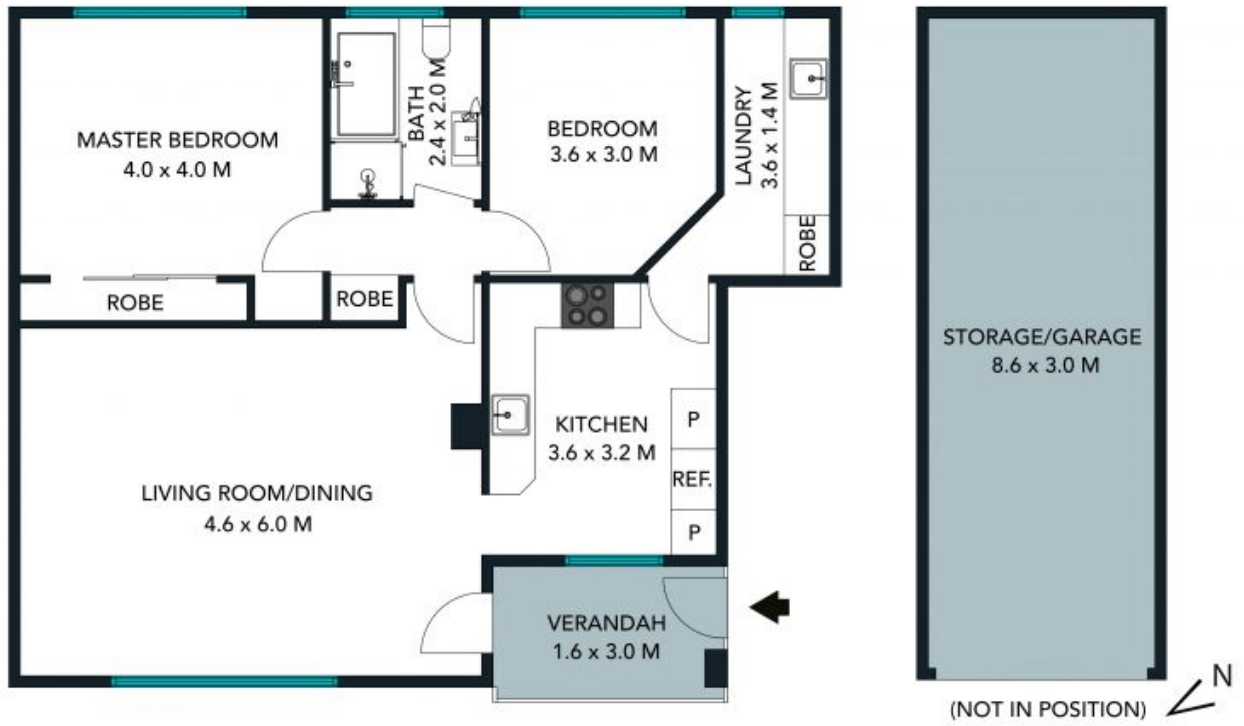
Price:

Contact Agent



Andrew Braid

0404 979 597



The floor plan is not to scale, measurements are indicative and in metres. Colour elements are not to position. Plans should not be relied on. Interested parties should make and rely on their own enquiries. All other information provided has been collected from reliable sources but cannot be guaranteed for accuracy.

10/189 Pacific Highway, Lindfield





The floor plan is not to scale, measurements are indicative and in metres. All features included in this 3D plan are for inspiration purposes only. This is not an exact replica of the property or the position of exterior elements. Plans should not be relied on. Interested parties should make and rely on their own enquiries.

10/189 Pacific Highway, Lindfield

