



3/35 East Esplanade Manly, NSW



### Harbourfront apartment with postcard-perfect views

Positioned directly opposite Manly Cove Beach with dreamy views reaching down the harbour to The Eastern Suburbs, this bright and spacious security apartment is pure harbourfront bliss. Move straight in and live it up just footsteps from beaches, Manly Wharf and a smorgasbord of world-class bars, brasseries and restaurants.

Price: Deposit taken

Available Date: 01/02/2020



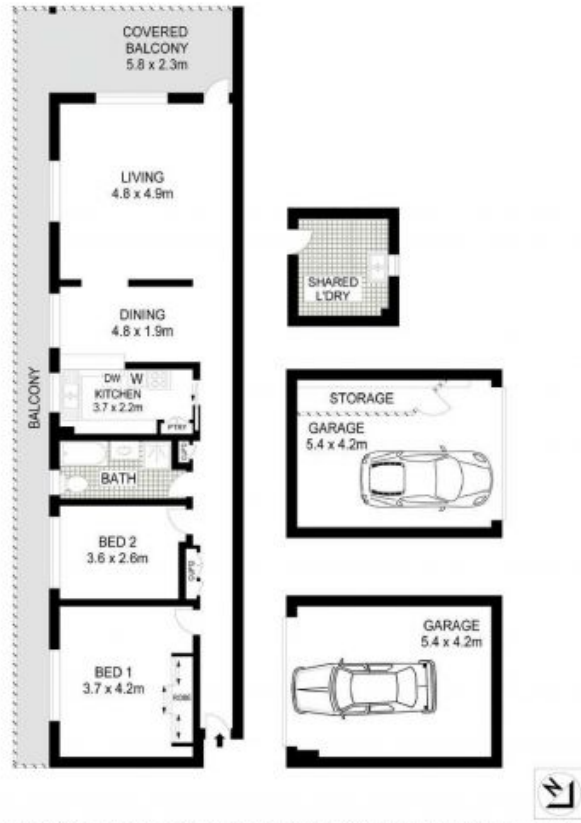
Todd Baker

0407 795 090



Sarah Cass

0478 086 411



Drawings are approximate. All information contained herein is gathered from sources we believe to be reliable. However, we cannot guarantee its accuracy and interested persons should rely on their own enquiries. [www.idbgroup.com.au](http://www.idbgroup.com.au)

3/35 East Esplanade, **MANLY**

APPROX. INTERNAL FLOOR AREA: 86 SQM