



23 Protea Place Cherrybrook, NSW

5 1 3 2

Exceptional family appeal in unbeatable location

A fresh contemporary reinvention and unrivalled cul-de-sac position grant this quiet single level home a truly superior edge. Set high on the hills atop an expansive 1021sqm parcel with convenience second to none, it delivers effortless family functionality, versatile scope for self-contained accommodation and direct walkway access to Cherrybrook Tech and John Purchase Public.

- Central gas kitchen with new oven/dishwasher, breakfast bar and casual meals
- Stylish neutrally schemed interiors, newly painted/carpeted and ready to enjoy
- Generous family living sectioned for attached second residency/outdoor access
- Well-proportioned formal living/dining filled with sunlight, updated bathrooms
- Flexible 6th bed/home office, master suite features large ensuite/walk-in robe
- Impressive rear yard with entertainers' terrace, private lawns, saltwater pool
- Dual auto garage with rear access, excellent storage, ducted air conditioning
- Moments from Cherrybrook village and station, buses, Castle Towers shopping

Price: Sold \$1,750,000
Council Rates: \$482.00 p/q
Water Rates: \$177.00 p/q



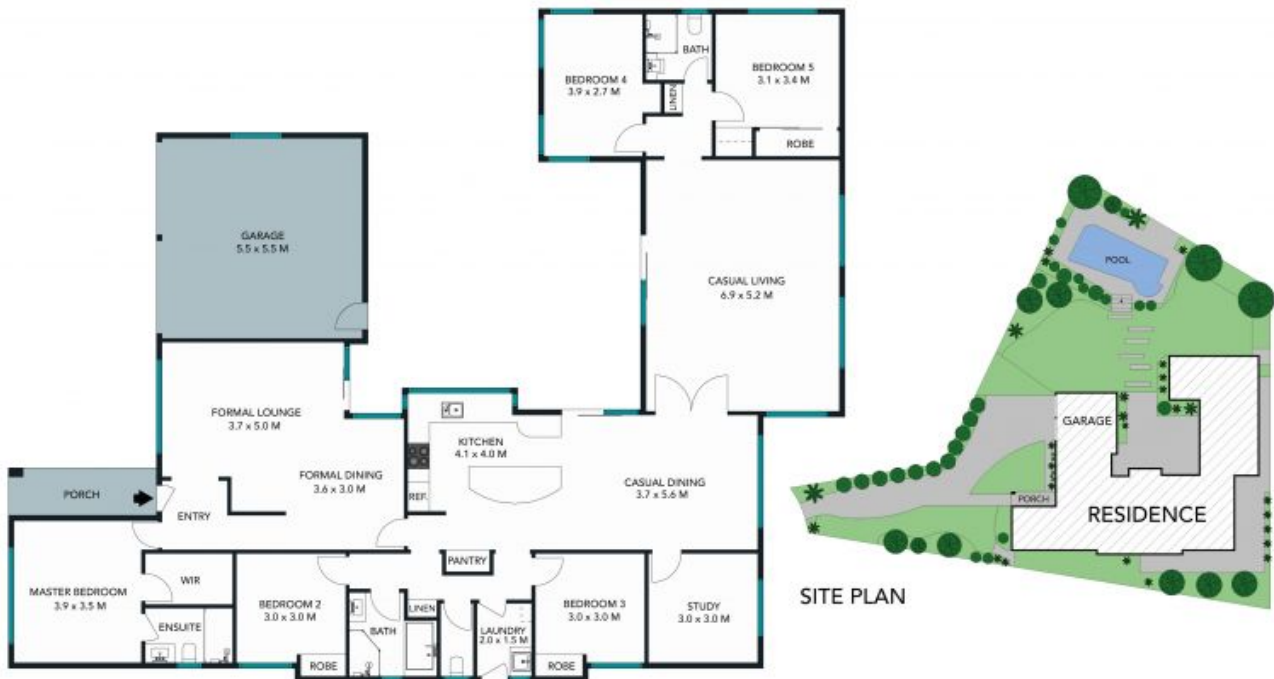
Graham Black

0400 381 217



Vincent Goh

0412 316 797



SITE PLAN



The site plan and floor plan are not to scale, measurements are indicative and in meters. Roads and trees are placed for illustration purposes. Plans should not be relied on. Interested parties should make and rely on their own enquiries. All other information provided has been collected from reliable sources but cannot be guaranteed for accuracy.



The floor plan is not to scale, measurements are indicative and in metres. All features included in this 3D plan are for inspiration purposes only. This is not an exact replica of the property or the position of exterior elements. Plans should not be relied on. Interested parties should make and rely on their own enquiries.

23 Protea Place, Cherrybrook



STONE