



34 Albert Road Beecroft, NSW

5 3 2

Stately family home in prime 1,572sqm location

An iconic Beecroft property, "Glenwood" (c1935) is a grand family home with generous interiors offering a choice of living accommodation, casual and formal meal areas, and a separate study, nursery or 5th bedroom. The expansive grounds include a private north-facing rear yard with swimming pool, paved entertaining areas, and a relaxing bush outlook. Its prime setting on a 1,572sqm block enjoys superb proximity to Beecroft Public, Cheltenham Girls, village shops and rail.

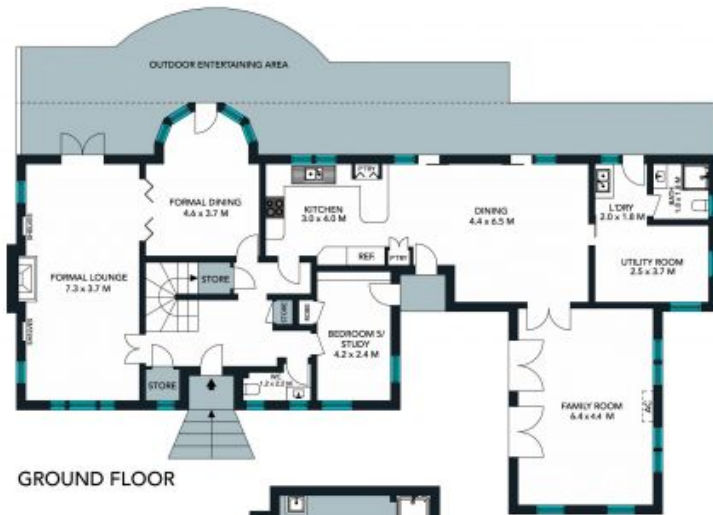
Price: Contact Agent
Council Rates: \$602.70 p/q
Water Rates: \$172.04 p/q



Jeff Jianfu Luo
0425 286 668



Kevin Dearlove
0403 338 302



GROUND FLOOR



SITE PLAN



LOWER GROUND FLOOR



FIRST FLOOR

The site plan and floor plan are not to scale, measurements are indicative and in metres. Shades and lines are placed for illustration purposes. Plans should not be relied on. Interested parties should make and rely on their own enquiries. All other information provided has been collected from reliable sources but cannot be guaranteed for accuracy.





The floor plan is not to scale, measurements are indicative and in metres. All features included in this 3D plan are for inspiration purposes only. This is not an exact replica of the property or the position of water elements. Plans should not be relied on. Interested parties should make and rely on their own enquiries.

34 Albert Road, Beecroft

