

25 Kardella Avenue Killara, NSW

5 

2 

2 

Outstanding entertainer's lifestyle

Impeccably renovated into a contemporary sanctuary of designer style, light and space, this bespoke family retreat offers sophisticated modern living and entertaining with nothing further to spend. Nestled amidst peaceful manicured gardens with a sparkling pool on approx. 1107sqm, its coveted east-side address is a stroll to rail, Killara Park, Swain Gardens and Killara High.

- Timelessly elegant formal living room with Jetmaster fireplace & bay window
- Expansive casual living and dining with seamless indoor/outdoor flow
- Wraparound bi-folds spill to large outdoor entertaining deck with auto vergola
- Sunny level lawn, gas-plumbed bbq area with water feature & sparkling pool
- Luxury kitchen with feature island, s/s benchtops, European appliances & WIP
- Upper level Master Retreat with WIR, balcony, superb ensuite & fitted study
- Four generous bedrooms with BIRs, 5th bedroom/media room, designer bathrooms
- Wine room, powder room, laundry, ducted r/c air, alarm system, double carport

Price:

Contact Agent



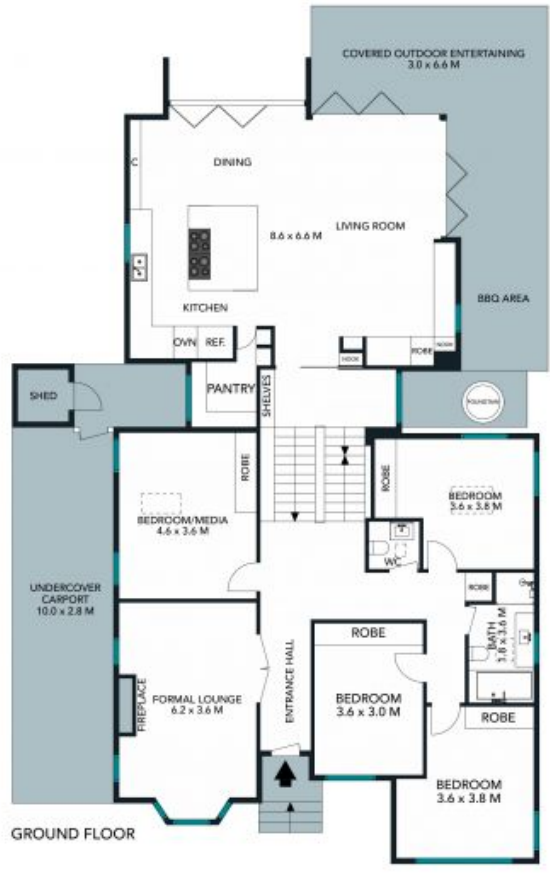
Steven Kourdis

0402 555 675



Ryan Woo

0410 884 680



The site plan and floor plan are not to scale, measurements are indicative and in metres. Bushes and trees are placed for illustration purposes. Plans should not be relied on. Interested parties should make and rely on their own enquiries. All other information provided has been collected from reliable sources but cannot be guaranteed for accuracy.

25 Kardella Avenue, Killara





The floor plan is not to scale, measurements are indicative and in metres. All features included in this 3D plan are for inspiration purposes only. This is not an exact replica of the property or the position of exterior elements. Plans should not be relied on. Interested parties should make and rely on their own enquiries.

25 Kardella Avenue, Killara

